

The logo for EUROMEC is displayed in a stylized, bold, blue font with a white outline. The letters are interconnected, with the 'U' and 'R' being particularly prominent. The logo is set against a white background within a rounded rectangular frame.

EUROMEC

ENGINEERING AND INDUSTRIAL SYSTEMS

FUMES TREATMENT PLANTS AND DEDUSTING SYSTEMS

The background of the entire page is a vibrant landscape photograph. It features a clear blue sky filled with numerous small, white, fluffy clouds. In the foreground, there is a lush green field of tall grass and wildflowers. On the left side, a tall, dark green coniferous tree stands prominently. In the distance, a line of smaller trees and a hillside are visible under the bright sky.

DESIGN
CONSTRUCTION
SUPPLY
ASSEMBLY AND STARTING

EXPERIENCE AND EXPERTISE

Euromec has acquired over the years more and more expertise in the design and supply of:

- Plant and equipment for the solids materials transport and their storage
- Weighing and dosing systems
- Fumes treatment plants and dedusting systems from 5.000 m³/h up to 2.000.000 m³/h and more.

Euromec srl supports the customer during the plant study and engineering to its realization, the assembly on site, the start-up and training of maintenance staff.



The service that Euromec Srl guarantees its customers is FULL and provides:

- Feasibility Study
- Mechanical and Electrical detail Engineering
- Supply of machinery and steel structures with complete assembly on site
- Revamping of existing plants
- System startup and optimization
- Training of maintenance staff
- After-sales service

The main areas of Euromec Srl are:

- Steel
- Foundries
- Biomass plants
- Systems for Oil & Gas
- Cement
- ... and more

**Filter and cyclone engineering,
construction and erection from
5.000 to 2.000.000 m³/h**



MAIN PRODUCTS:

Bag filter

Cyclones

Wet scrubber

Pneumatic conveying system

MAIN FIELD WHERE WE CAN OPERATE:

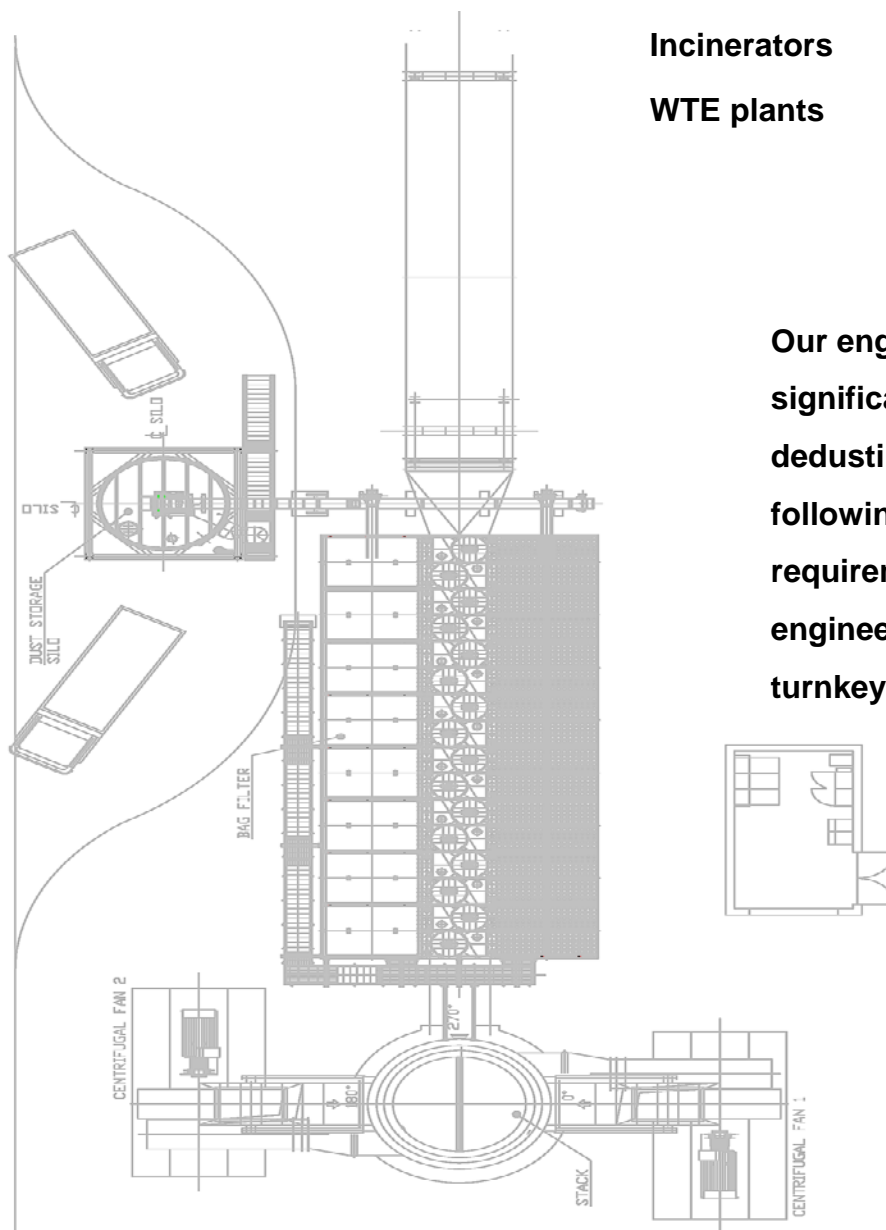
Steel making plant

Cement factories foundry

Petrochemical industries

Incinerators

WTE plants



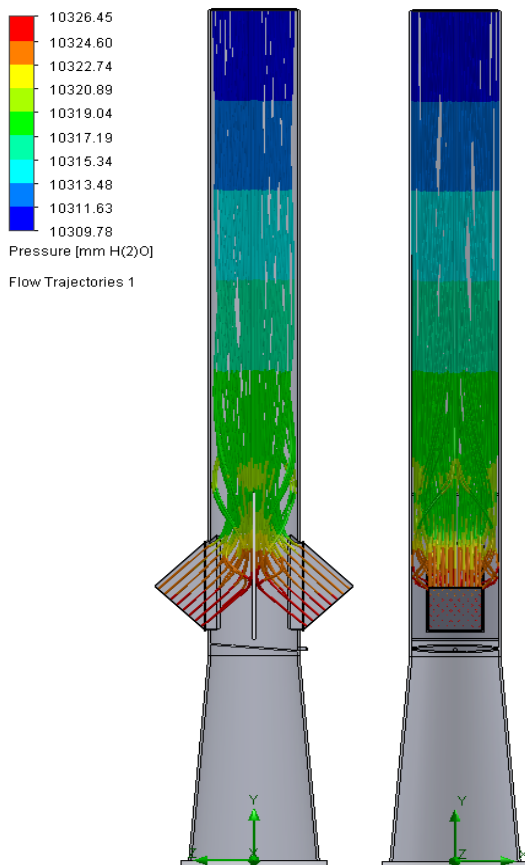
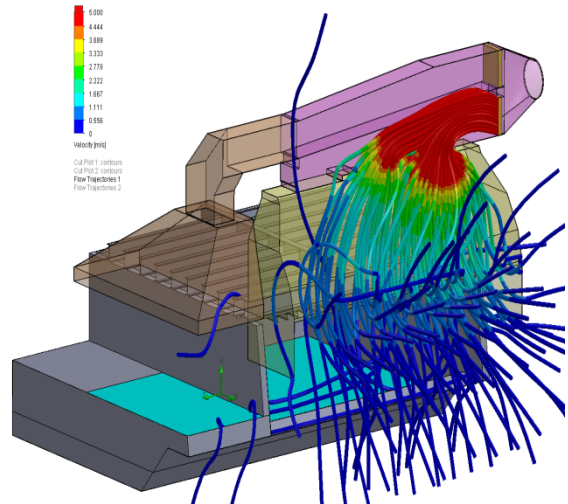
Our engineering staff, boasts a significant experience in the dedusting system realization, following the customer requirements, starting from the engineering phase up to the turnkey plant construction.

GAS TREATMENT SYSTEMS

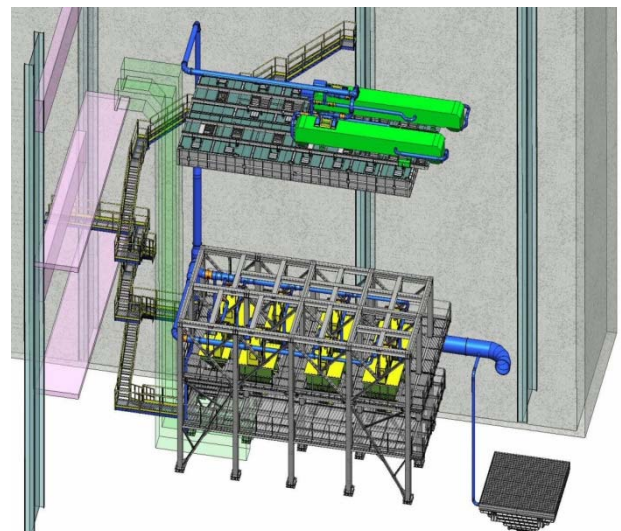
Euromec srl It is specialized in solving the problems related to the presence of each type of pollutant in the flue gas from industrial processes.

According to the customer requirements, Euromec Srl designs and builds the plant in accordance with Best Available Techniques (BAT) using different types of pollution abatement, for example:

- Dry Filtration (bags, cartridges, candles)
- Wet Filtration
- Electrostatic filters
- Reagents injection systems and DeNOx
- Coal filters
- Exchangers and Quenching towers



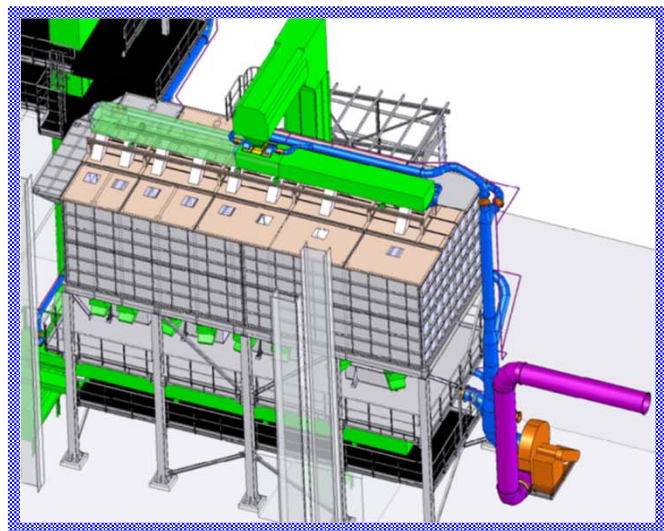
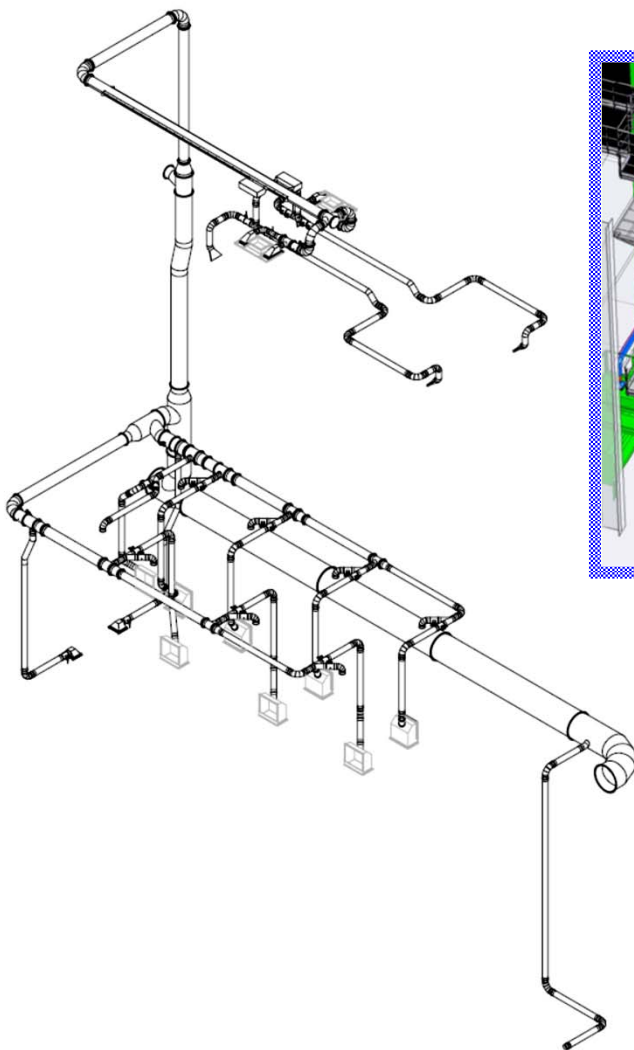
Euromec srl can use for the layout or detailed engineering development both 2D and 3D software (such as AutoCAD, Solid Works, etc.) and realize thermal / fluid dynamic studies in order to optimize process engineering.





Dust collector system with fans, filters and related dust recovery and storage system.

All the material transfer (jump) points are inhaled with pipelines so that speed inside does not overcome $V=20$ m/sec, in connection points of pipelines with the main manifold won't have inferior angle to the 45°



Dedusting system drawing with 3D "Solid Works" software, we have a dedicated software for pipelines planning and design (pipes diameter, total head etc.)

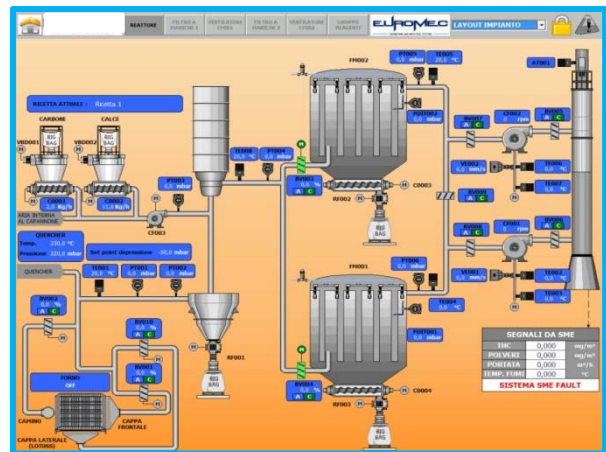
EXAMPLES

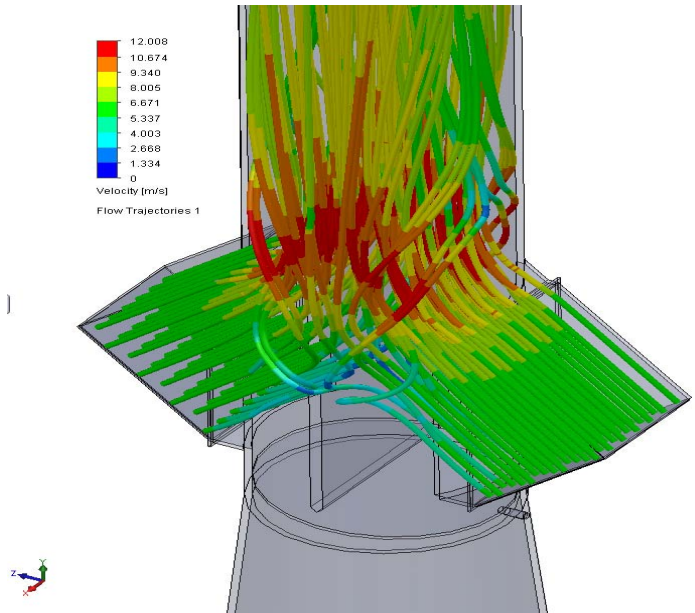


Euromec srl realizes tailored solutions ensuring maximum performance and reliability.

The orientation to the customer satisfaction and the company's flexibility allows us to approach the different levels of supply, as:

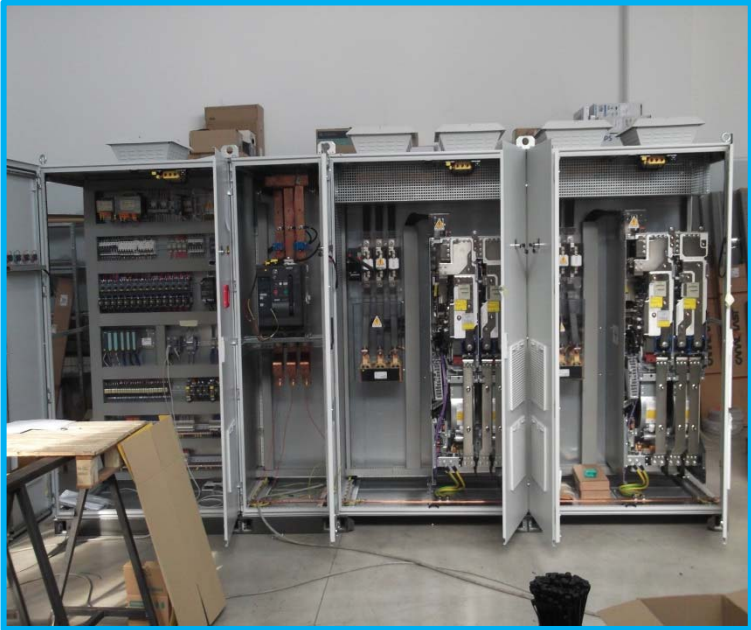
- Feasibility studies
- Provision and engineering of noble parts
- Complete supply plant
- Turnkey supply





EUROMEC

ENGINEERING AND INDUSTRIAL SYSTEMS



EUROMEC

ENGINEERING AND INDUSTRIAL SYSTEMS



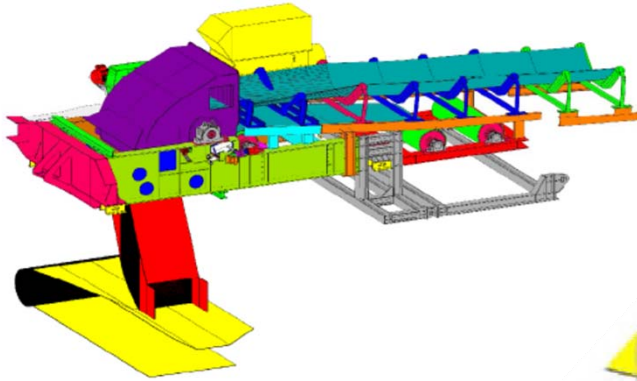
VALVES FOR GAS CIRCUITS



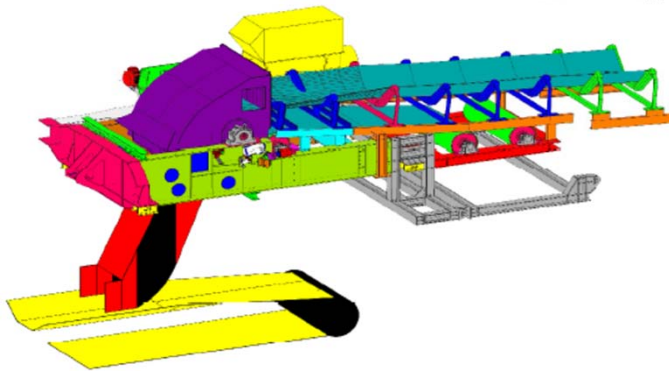
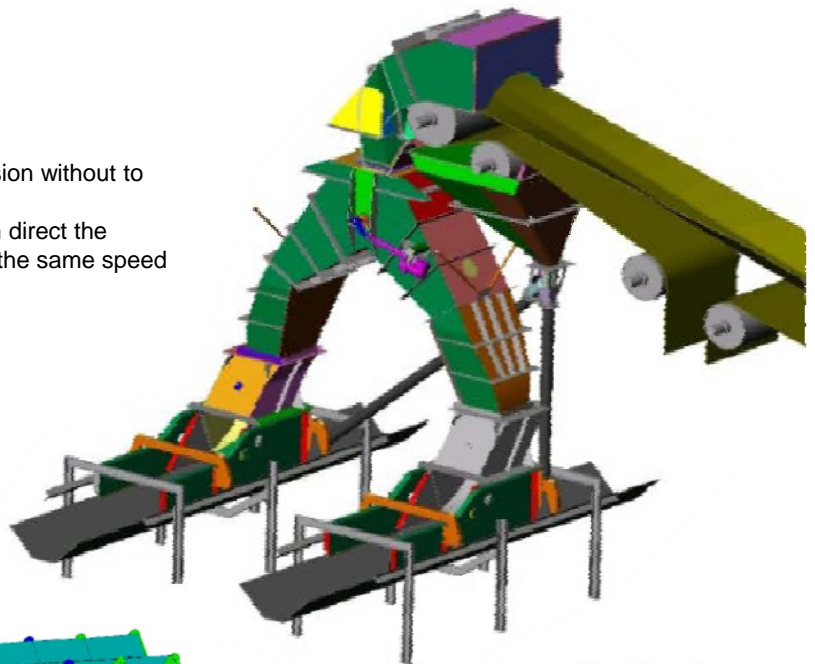
Dedusting, regulation, process, in normal or high temperature, with special coating in ceramic or anti-wear steel, with sealing system until 99%



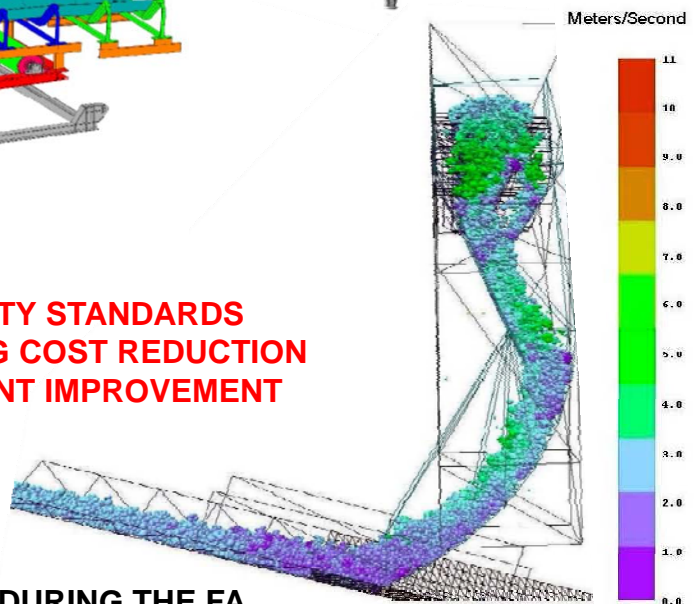
LOW DUST EMISSION CHUTES



This system can permit to minimize dust emission without to use the filter for each retail discharge point. Through a special calculation program, we can direct the material flow into reception belt conveyor with the same speed and minimize dust emission eliminating the sources (impact point).



**HIGH SAFETY STANDARDS
OPERATING COST REDUCTION
ENVIRONMENT IMPROVEMENT**



MATERIAL SPEED DISTRIBUTION DURING THE FA

BEFORE

MISSADVANTAGES

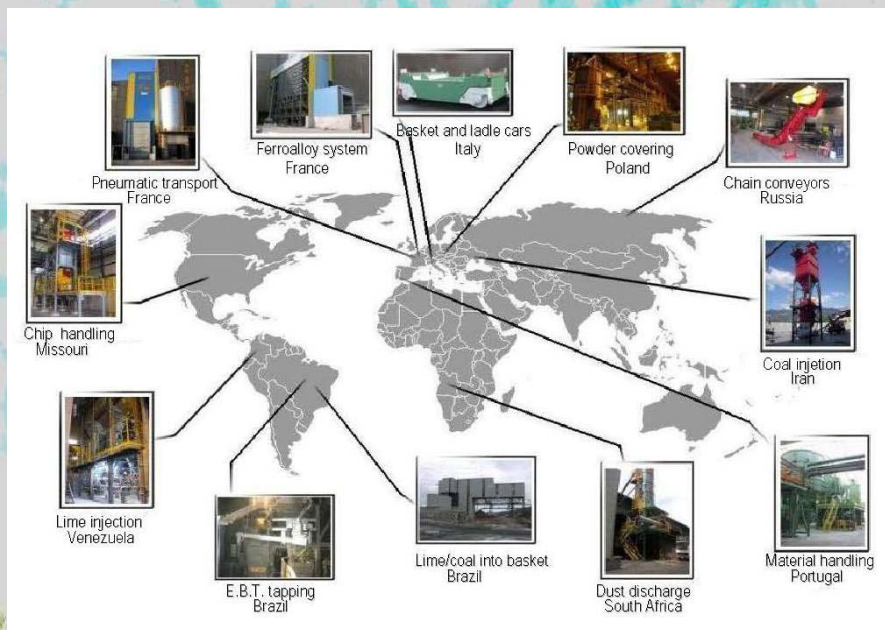
High wear.
Three times impact.
Three times dust generation and need filter.
High spillage value.
Energy lost to accelerate material.
High maintenance cost.



AFTER

ADVANTAGES

Minimize dust escape reduced below current low limit.
Minimize dust generation reducing material degradation.
Minimize material loss and spillage from skirt seals.
Minimize belt wear and chute maintenance costs.
Minimize noise generation.
Minimize decentrated loading.
Minimize energy lost.
Eliminated impact bar.
Eliminated dust filter.



EUROMECC SRL

Treatment Fumes Plants Division:

Via Cesare Da Sesto, 12; 20099 Sesto San Giovanni (MI) Italy

Tel. +39 02 83422250; Fax +39 02 83422255

dedusting@euromectech.it

euromectech@euromectech.it - www.euromectech.it

Registered Office: Via de O, 19; - 24020 Dezzo (BG) Italy

Administrative and operative office: Via Cav. A. Bellicini, 36/a; 25040 Berzo Inferiore (BS) Italy