



# EUROMEC

Via Cavalier A. Bellicini, n. 36/A  
Berzo Inferiore (BS) Italy

Tel: +39 0364 300 687 – Fax: +39 0364 300 937

[euromectech@euromectech.it](mailto:euromectech@euromectech.it)

[www.euromectech.it](http://www.euromectech.it)

Additives and alloys  
addition systems into  
electric arc furnaces and  
ladle furnaces

Slag producer additives  
handling systems to  
furnaces and ladle

Storage and conveyor  
systems of bulk material  
for industry in general

Automatic machinery and  
plants for bulk material  
handling

**A turn key choice**

**MATERIAL HANDLING**

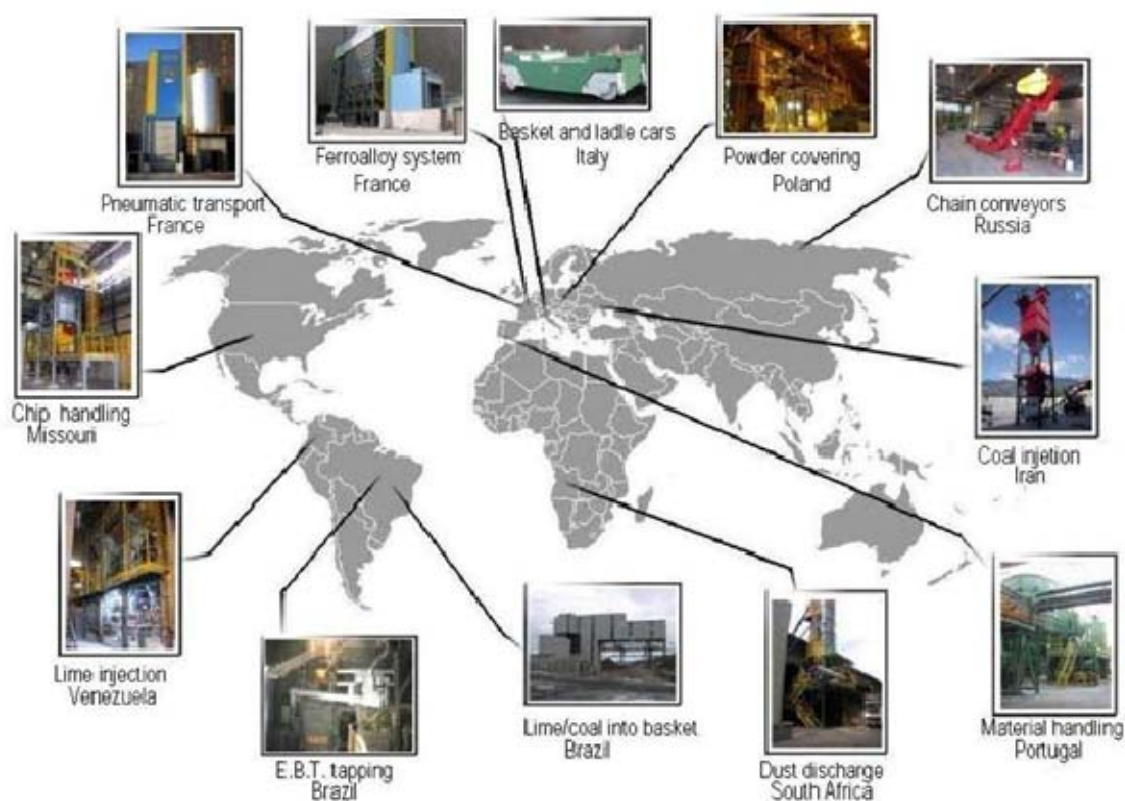
**DESIGN**

**CONSTRUCTION**

**SUPPLY**

**ERECTION AND START UP**

# MATERIAL HANDLING



## **EUROMEC S.r.l.**

**Legal office: Via de O, 19; - 24020 Dezzo (BG) Italy**

**Administrative and operative site: Via Cav. A. Bellicini, 36/a; 25040 Berzo Inferiore (BS) Italy**

**Tel. +39 0364300687; Fax +39 0364300937**

**Branch office for dedusting: Via Cesare Da Sesto, 12; 20099 Sesto San Giovanni (MI) Italy**

**Tel. +39 0283422250; Fax +39 0283422255**

**VAT: 02452580166 –. Share capital: € 80.000,00.**

**[euromectech@euromectech.it](mailto:euromectech@euromectech.it) - [dedusting@eurometech.it](mailto:dedusting@eurometech.it)**

**[www.euromectech.it](http://www.euromectech.it)**

# ALLOYS AND ADDITIVES SYSTEMS

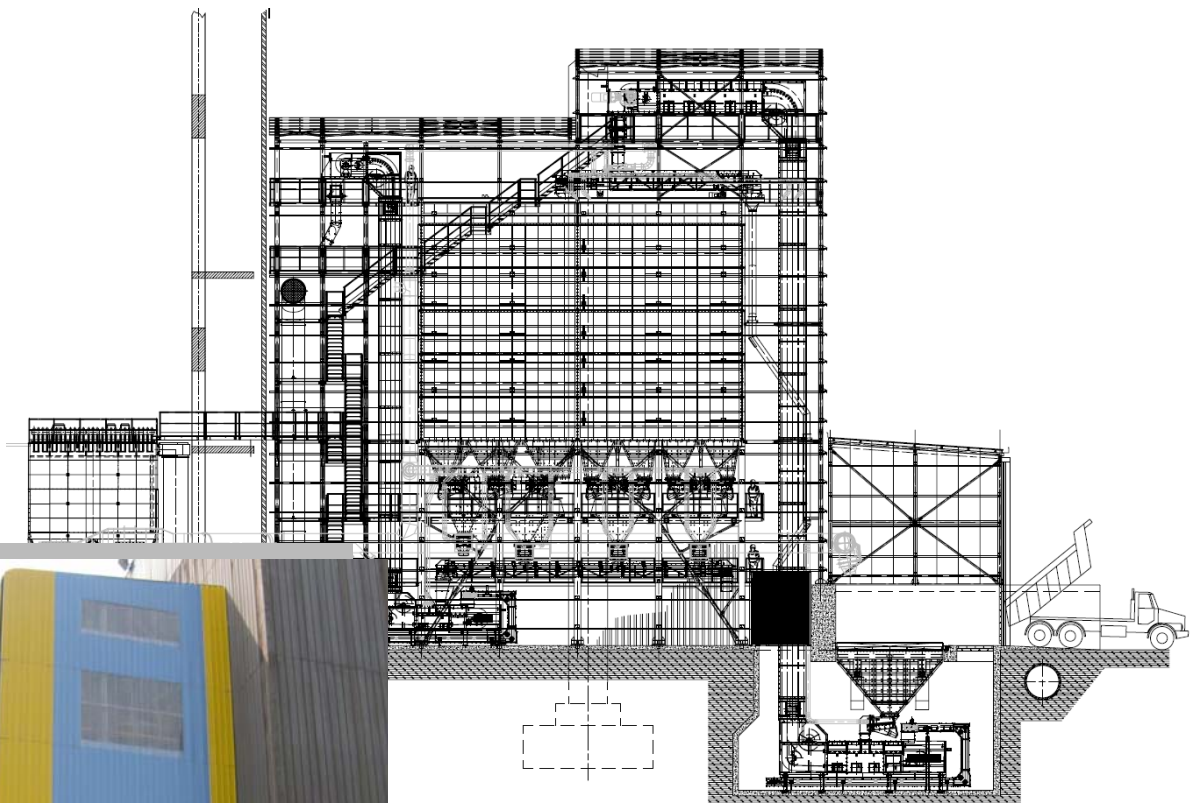
Alloys and additives to be dosed, batched and carried to a furnace or to a ladle are stored in modular hoppers with a typical capacity between 5 and 50 m<sup>3</sup> (max. 200 m<sup>3</sup>). The hopper battery is supported by an adequate steelwork structure.

Bulk materials are extracted from hoppers by a vibrating feeders (with magnetic drive and adjustable capacity). According to the process requirements, the needed amount of each material is extracted from related storage hopper and batched (in a weighing hopper fix or travelling under the hoppers' battery or on a weighing belt conveyor) then conveyed to the furnace or to the ladle.

Handled bulk material size is between 5 and 200 mm.



# ALLOYS AND ADDITIVES SYSTEMS



**Alloys and additives bins battery 1.000 m<sup>3</sup> capacity with a single weighing truck discharging hopper with 35 m<sup>3</sup> capacity**



# ALLOYS AND ADDITIVES SYSTEMS

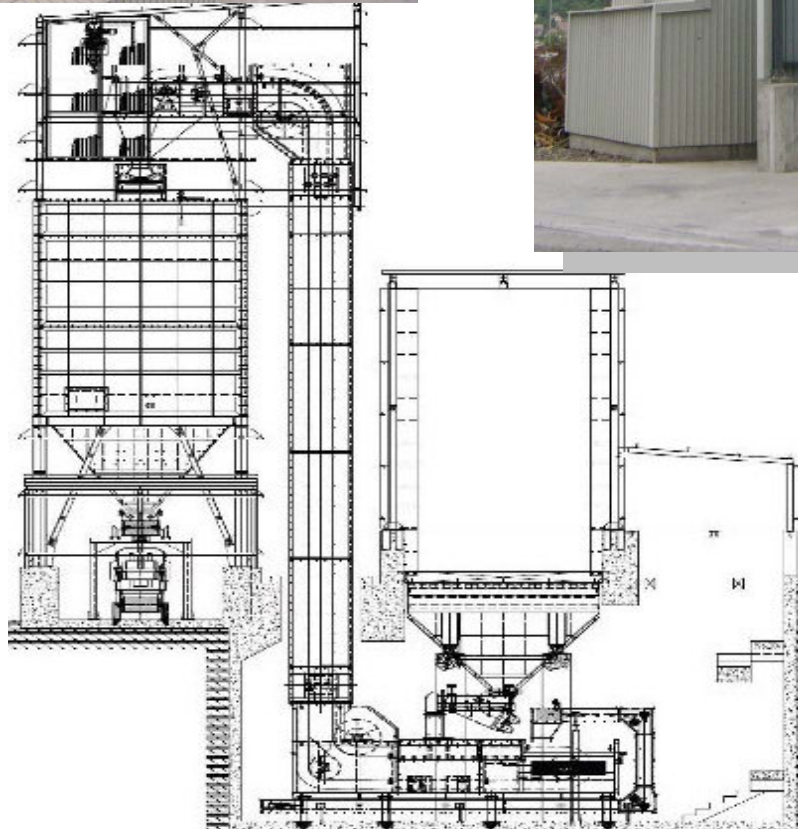


Alloys and additives complete system with 8 weighing bins 100 m<sup>2</sup> capacity to feed two ladle furnace stations; storage bins are charged by tote bins with a movable bottom.

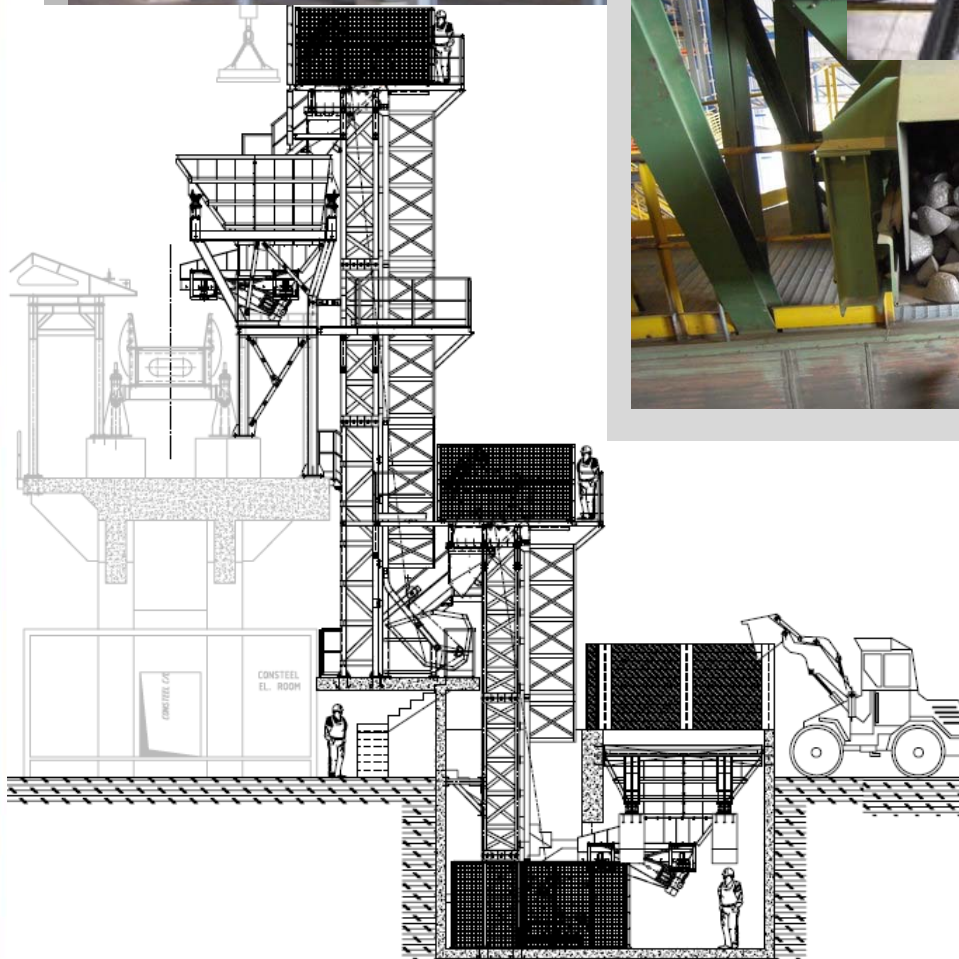


# BULK COAL SCRAP BASKET LOADING SYSTEMS

The system purpose is to handle, store batch and convey coal into scrap basket.  
Carrying capacity from 5 to 200 m<sup>3</sup>/h.



# CONSTEEL CAST IRON CHARGING SKIP AND DRAGLINE SYSTEMS

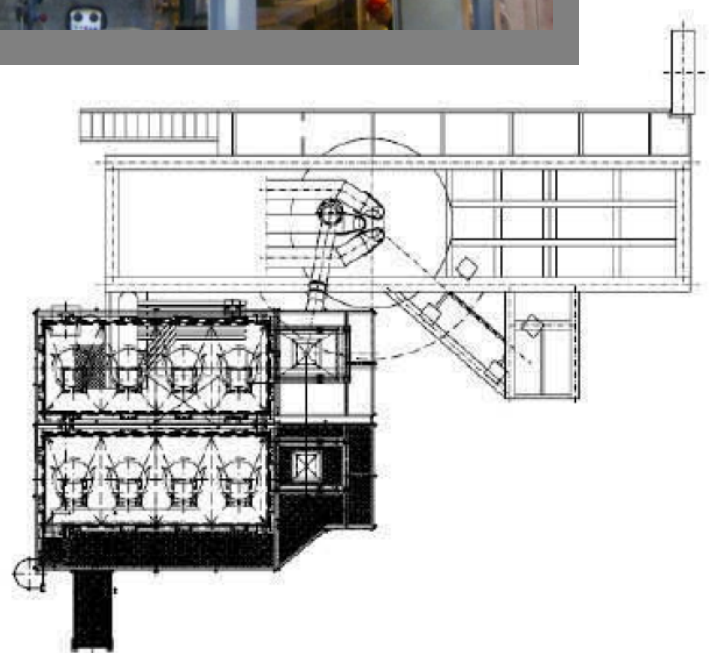
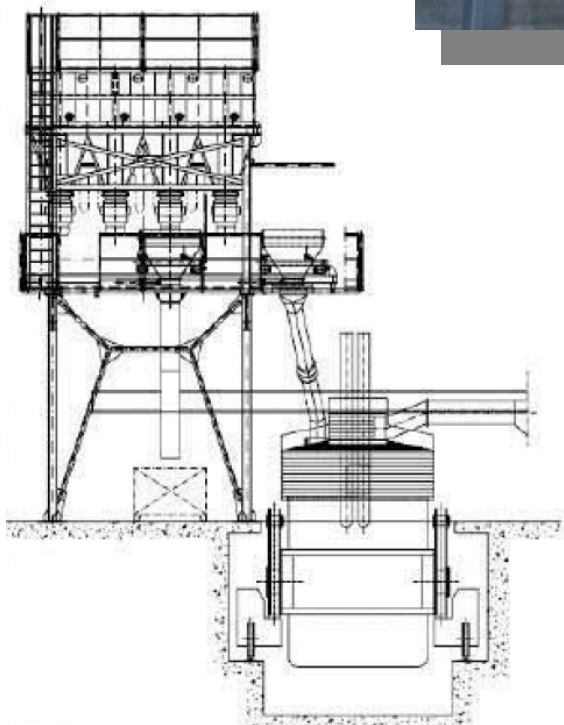


The system purpose is to handle, store, batch and convey cast iron pieces to consteel for continuous supply of EAF.

Carrying capacity from 60 to 100 ton. / h.

# ALLOY AND ADDITIVES SYSTEMS

Steel work plant installed system for additives and alloys storage, extraction and conveying to a ladle furnace.





# ALLOY AND ADDITIVES SYSTEMS



Complete mechanical and electric pre-assembly of the storage bins battery lower part of an additives handling system for ladle addition.

# CARBON TREATMENT SYSTEMS

Filter and cyclone  
engineering, construction  
and erection from 5.000  
to 10.0000 m<sup>3</sup>/h



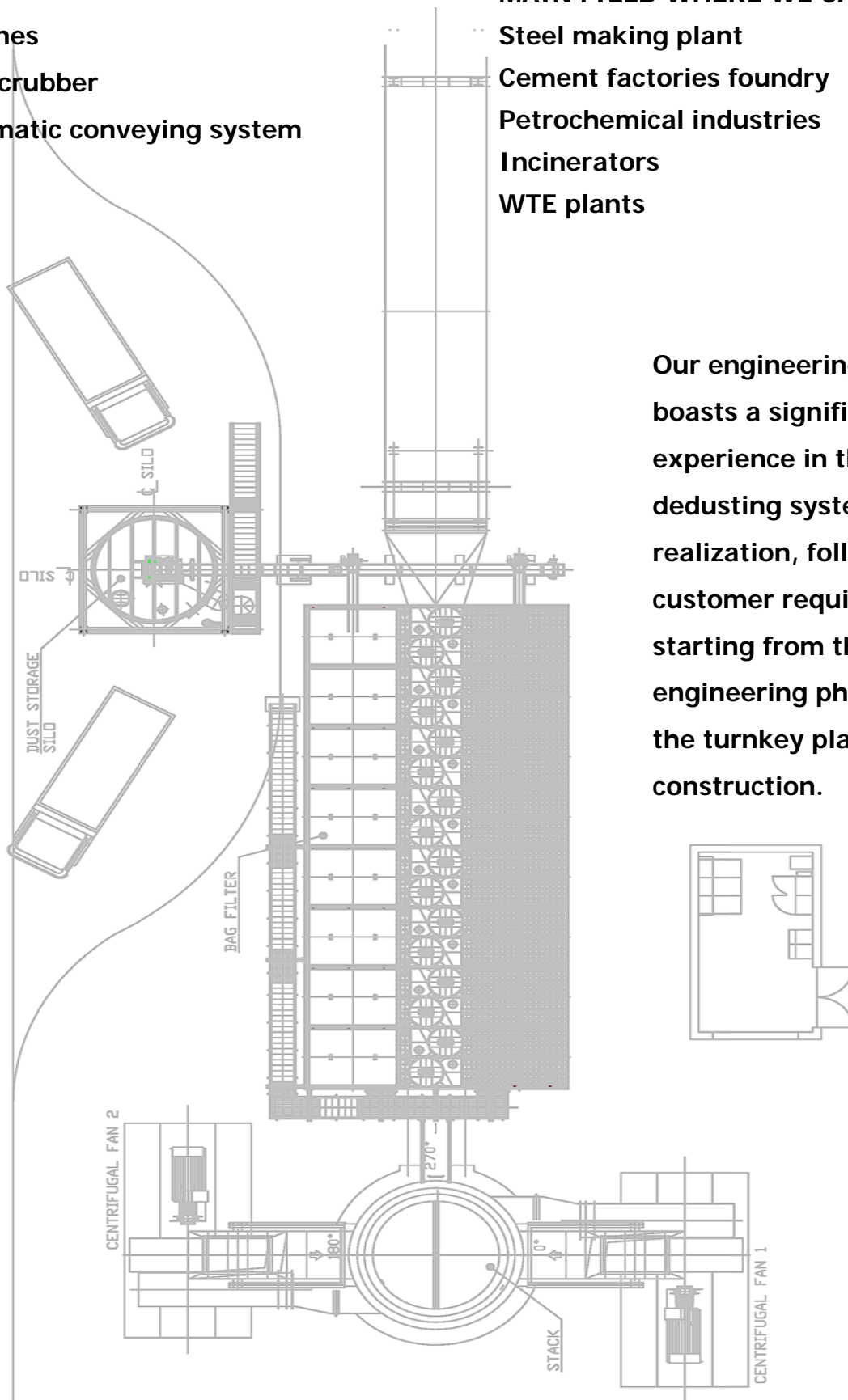
# CARBON TREATMENT SYSTEMS

## MAIN PRODUCTS:

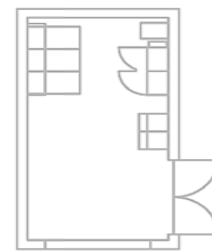
- Bag filter
- Cyclones
- Wet scrubber
- Pneumatic conveying system

## MAIN FIELD WHERE WE CAN OPERATE:

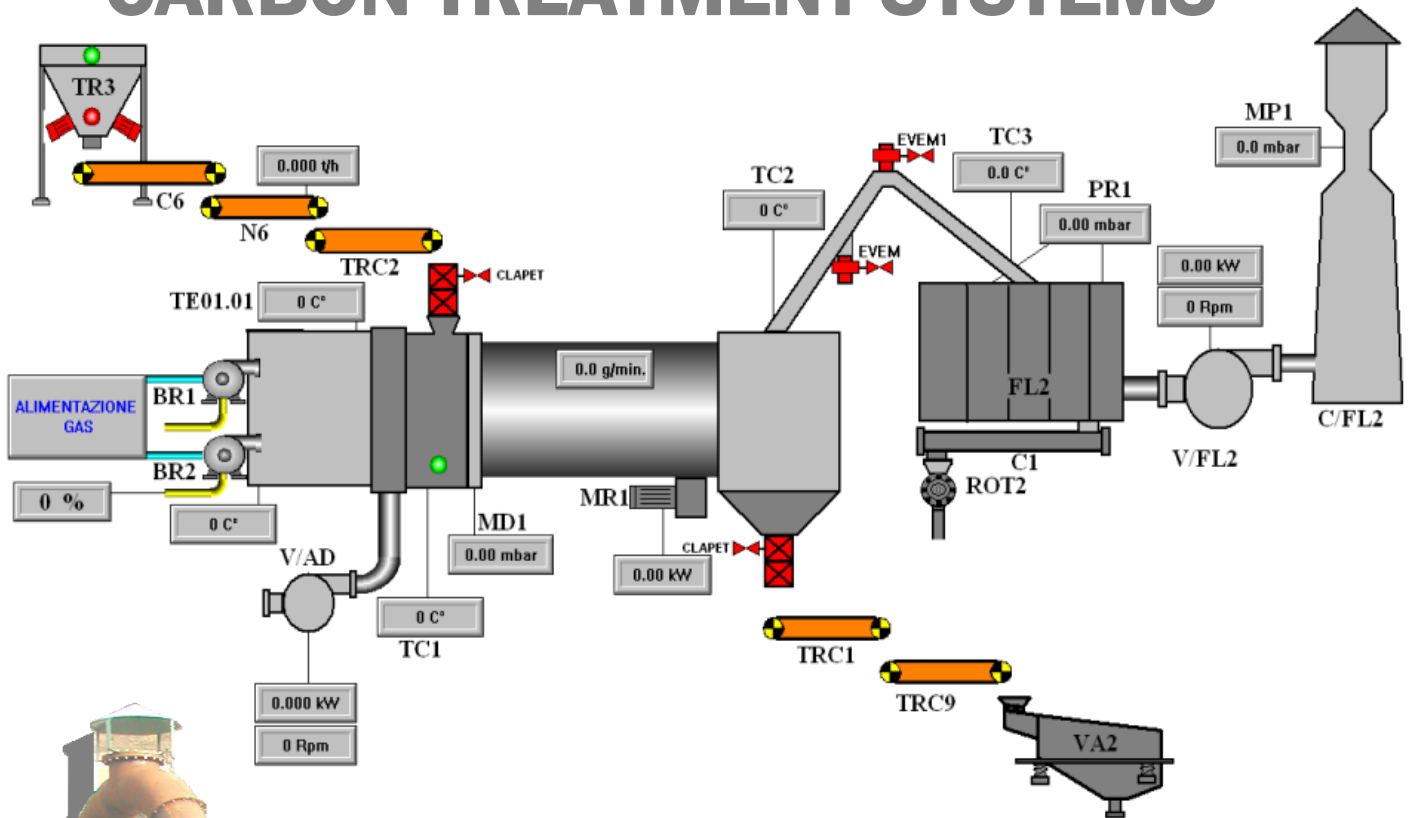
- Steel making plant
- Cement factories foundry
- Petrochemical industries
- Incinerators
- WTE plants



Our engineering staff, boasts a significant experience in the dedusting system realization, following the customer requirements, starting from the engineering phase up to the turnkey plant construction.



# CARBON TREATMENT SYSTEMS



Complete system carbon crushing screening, drying processing and stocking.

Capacity from 10 to 40 m<sup>3</sup>/h

# HBI - DRI STORAGE AND TRANSPORT SYSTEMS



**HBI - DRI material transport, storage and dosing system for EAF.**

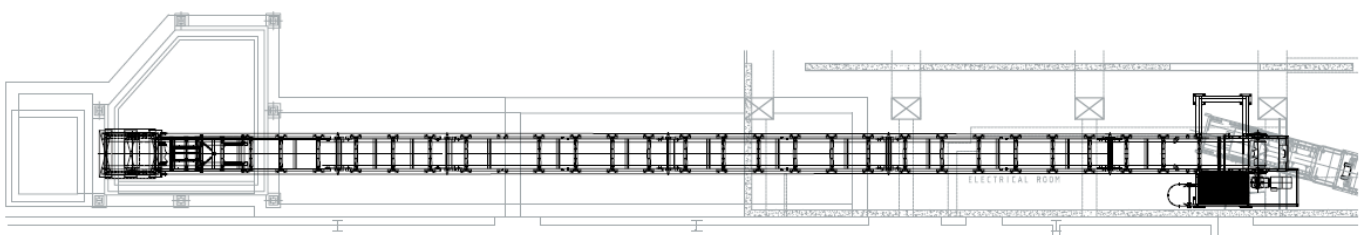
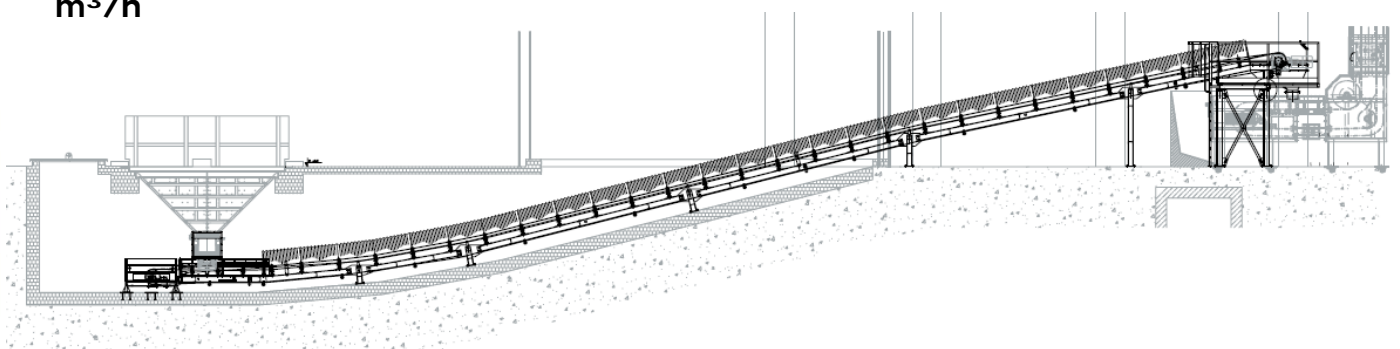
**Capacity from 30 to 250 m<sup>3</sup>/h**



# BELT CONVEYORS



Belt conveyors are used to carry or lift various bulk materials. Flow capacity from 10 to 250 m<sup>3</sup>/h



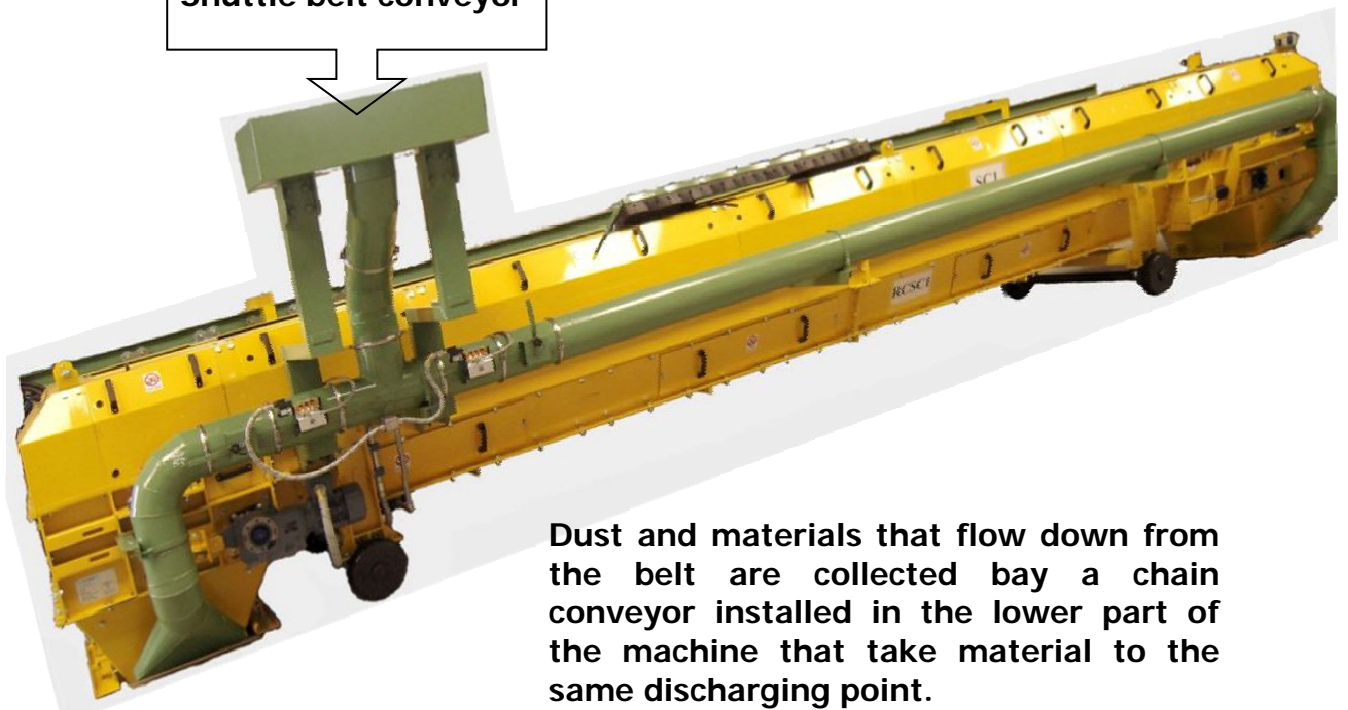
# BELT CONVEYORS



Belt conveyors in self-supporting carpentry structure, completely closed in way to avoid dust overflow.

Two gear motors: one for belt and one for chain, with different speed and force torque.

Shuttle belt conveyor



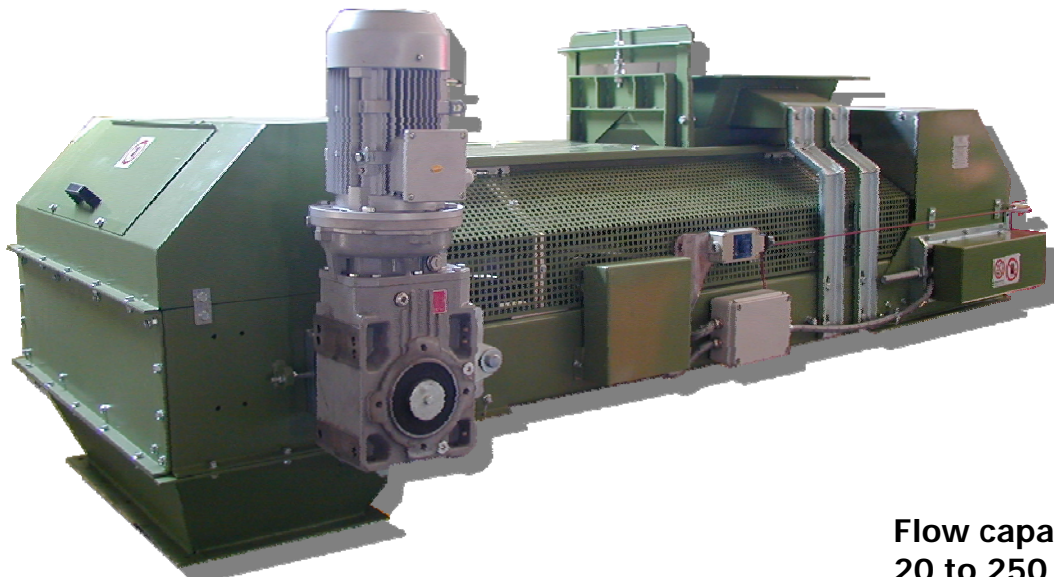
Dust and materials that flow down from the belt are collected by a chain conveyor installed in the lower part of the machine that take material to the same discharging point.

## Advantage!

No material or dust in working area, no material losses and fall from the belt.

# WEIGHING BELT CONVEYORS

Dosing belt conveyor,  
normally used for  
extraction material like  
ferroalloy, coal, lime,  
cement production, raw  
material and alumina from  
hoppers or bins.

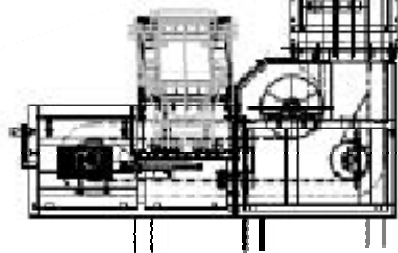
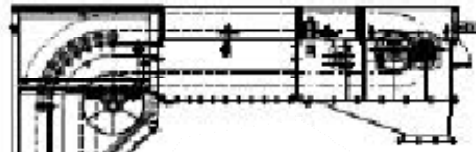


Flow capacity from  
20 to 250 m<sup>3</sup>/h



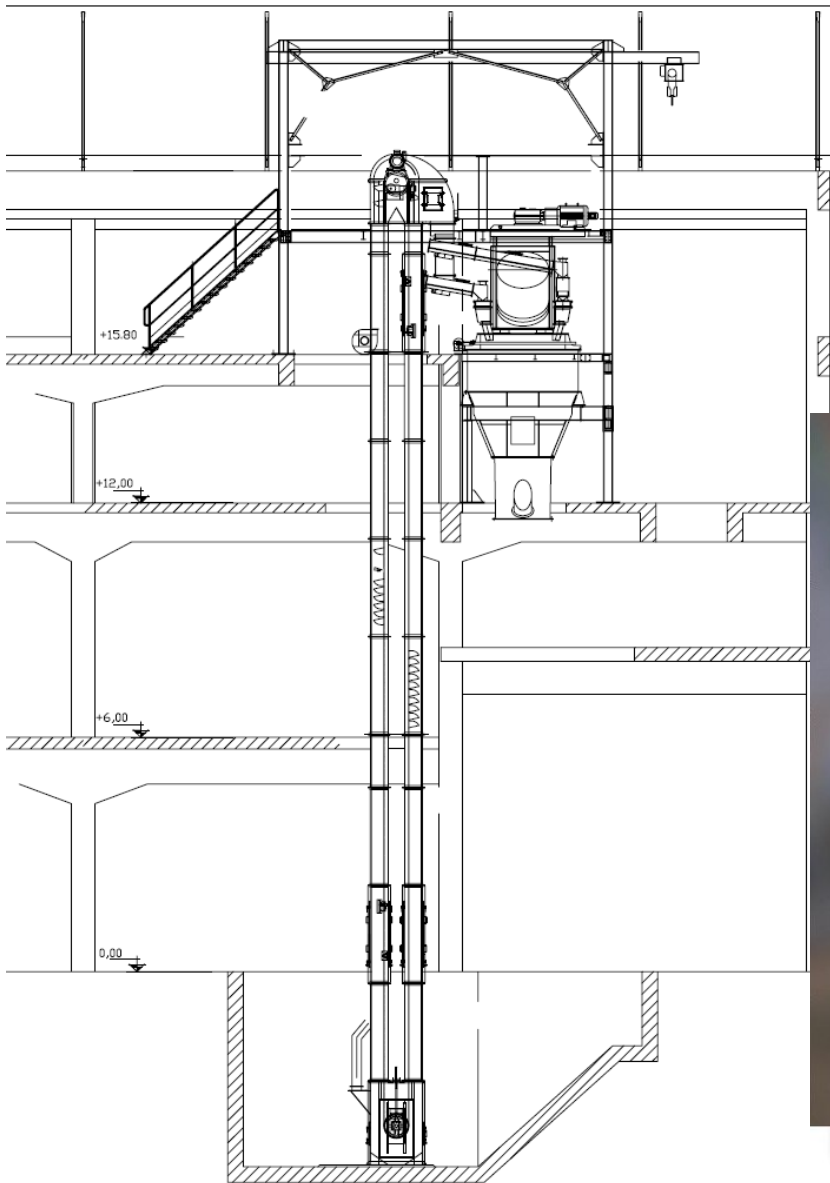
# LIFTING BELT CONVEYORS

Belt conveyors are used to carry or lift various bulk materials.  
Bucket lifting conveyors.  
"Z" pocket belt lifting conveyors.



Flow capacity  
from 20 to 150  
 $m^3/h$

# BUCKET LIFTING CONVEYORS



Bucket belt conveyors used to lift bulk materials in grains or powder.

Max. grain size: 15 mm.

Base belt: hot galvanized steel cords for tension carrier and transverse reinforcement, with rubber cover.

Bolted steel buckets.

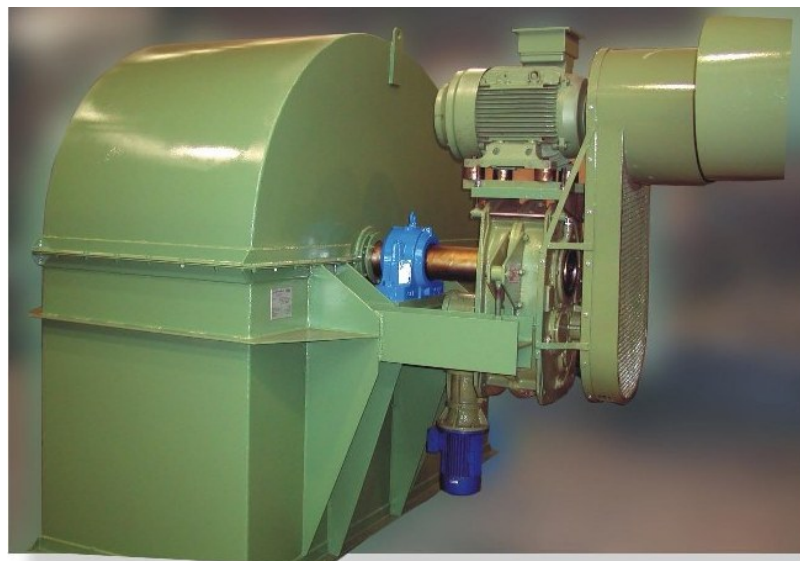
Max. capacity up to 500 tonn./h



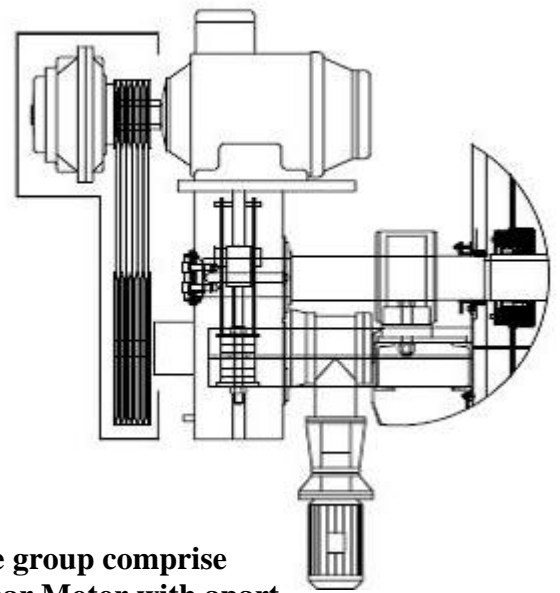
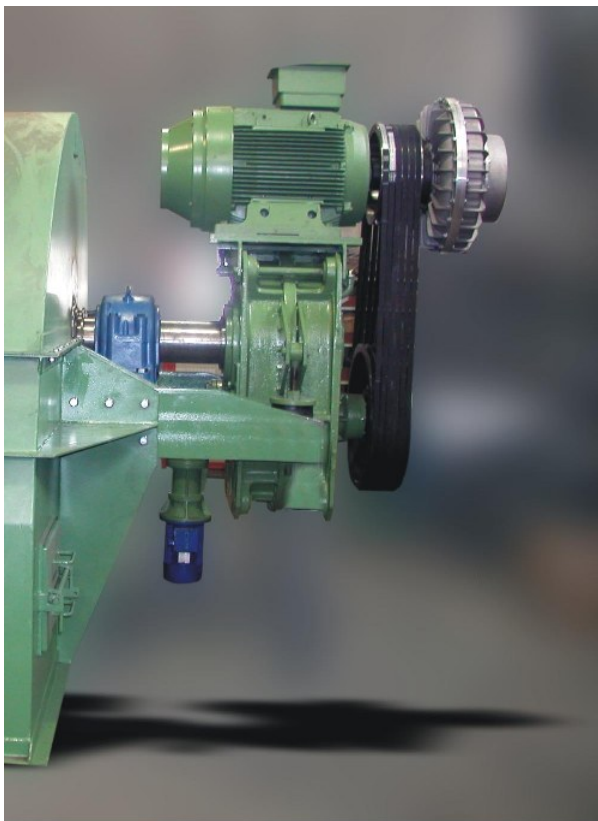
**OPERATING  
COSTS  
REDUCTION**

**HIGHT  
PERFORMANCE**

**STRONG  
CONSTRUCTION**



# BUCKET LIFTING CONVEYORS

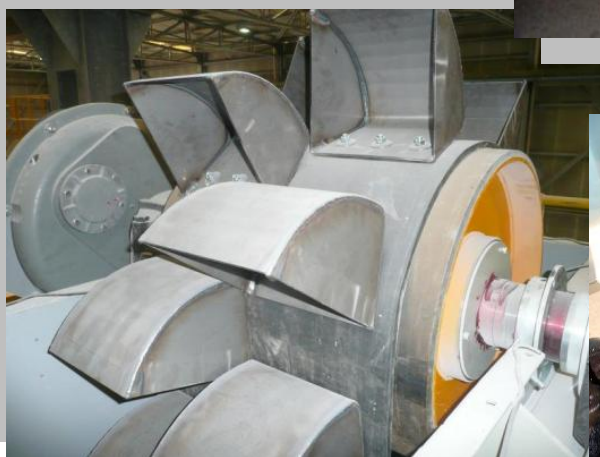


Head drive group comprise  
Fachini Gear Motor with apart  
slow emergency movement and  
transfluid idraulic coupler

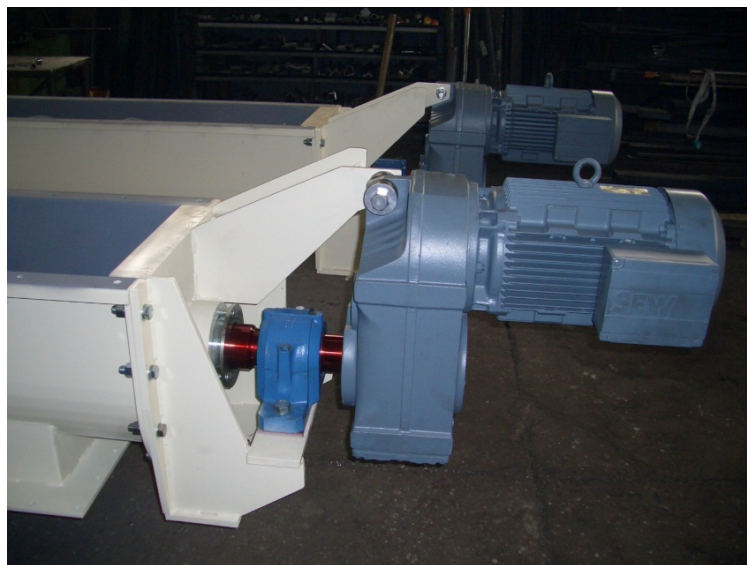
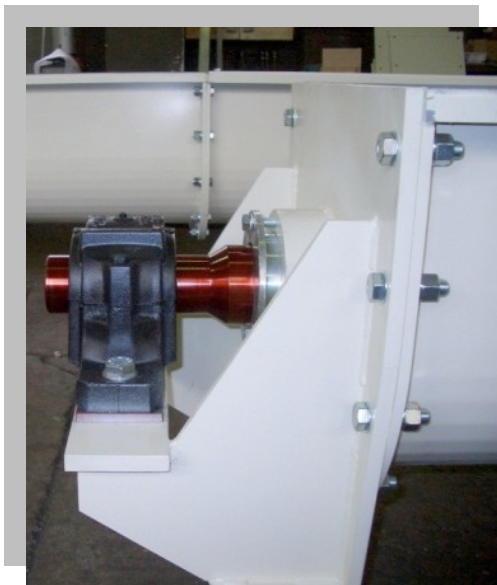
Fast belt elevators, for  
conveyance of powdery and/or  
small-size materials.

Special characteristics include:

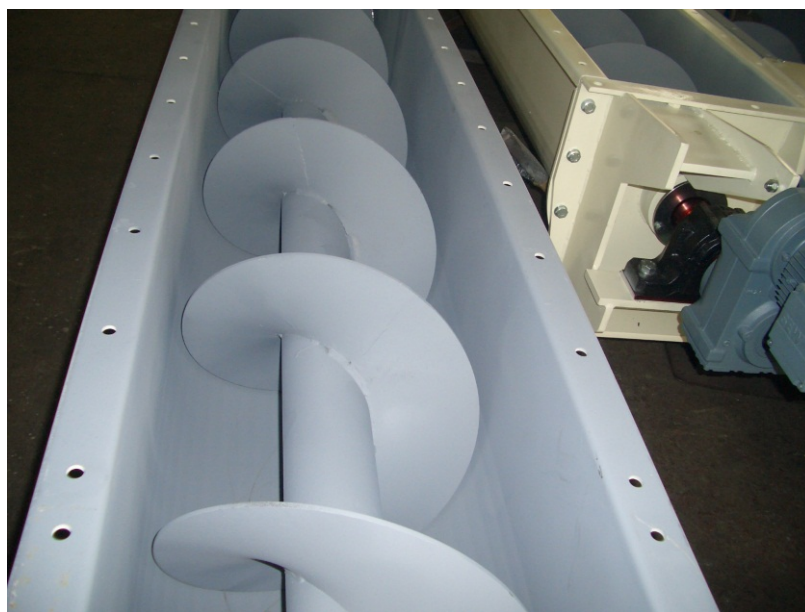
- Compact size
- Automatic belt centring
- Feed with minimum drag
- Special head with no recycled material



# SPECIAL SCREW CONVEYORS



**Without intermediate supports, including exceptional length**



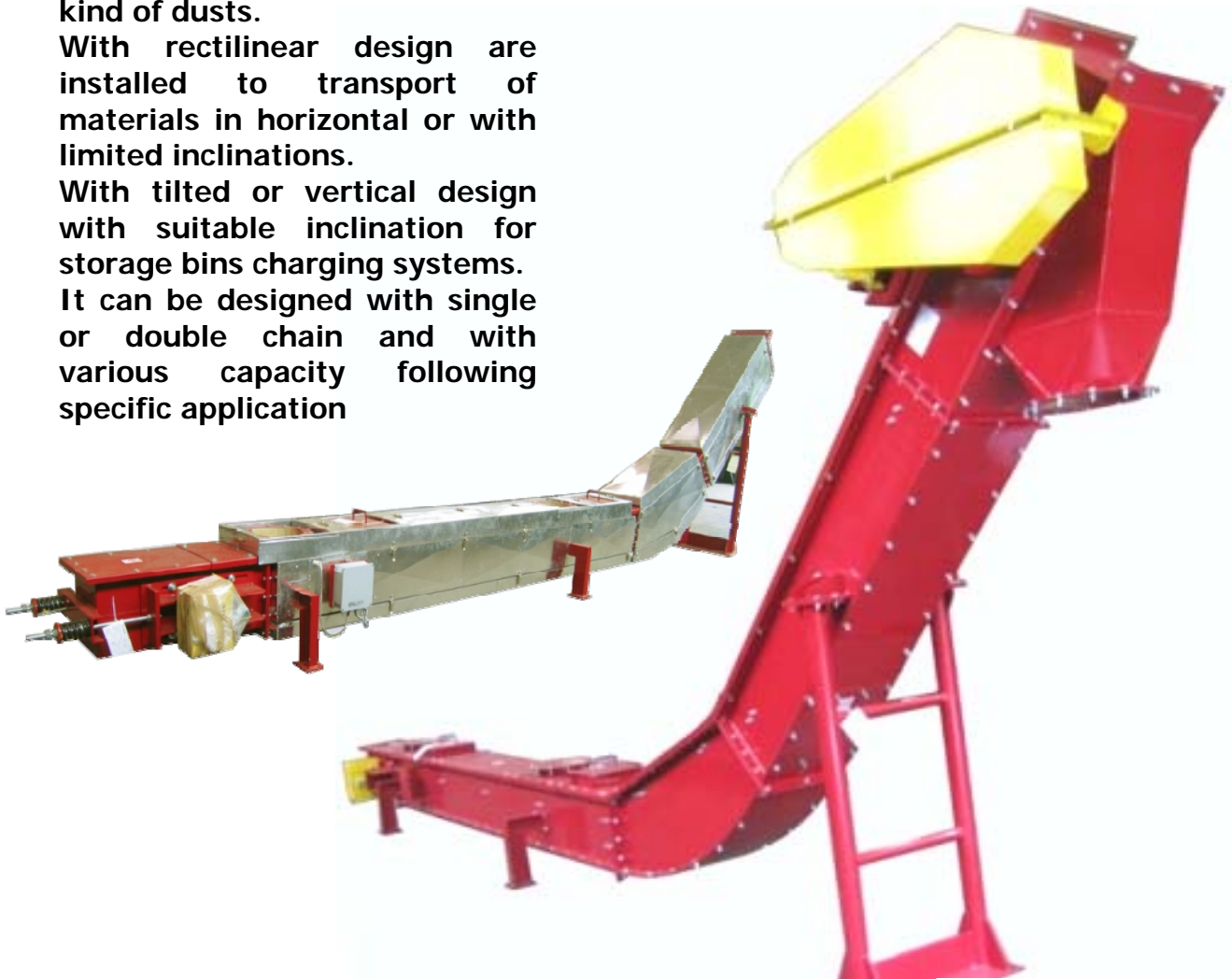
# CHAIN CONVEYORS

Chain conveyors for various kind of dusts.

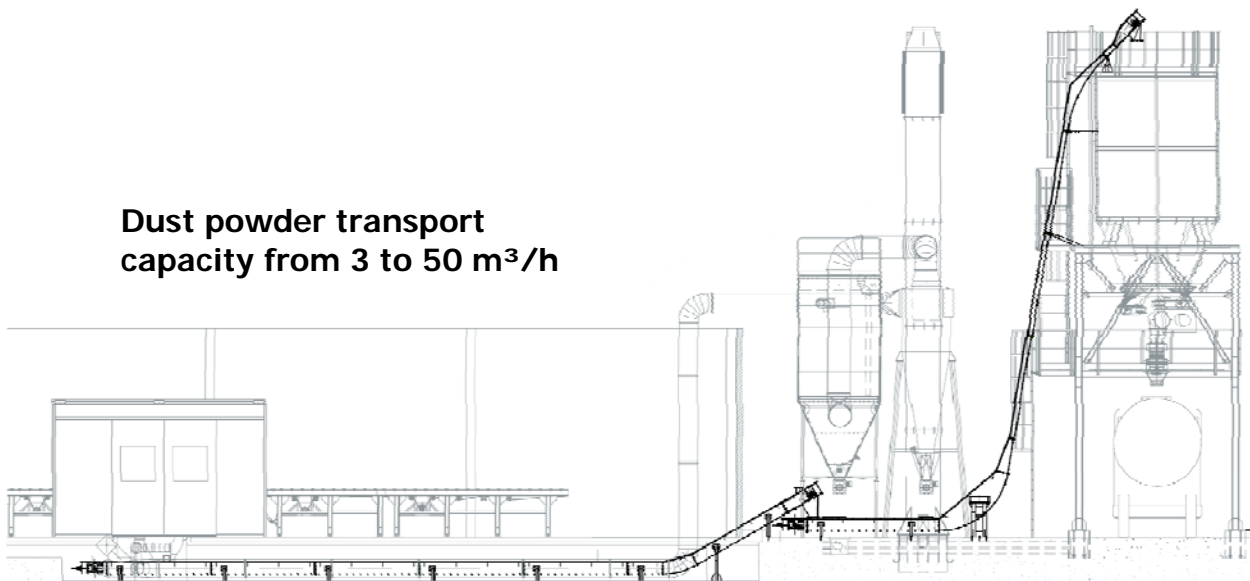
With rectilinear design are installed to transport of materials in horizontal or with limited inclinations.

With tilted or vertical design with suitable inclination for storage bins charging systems.

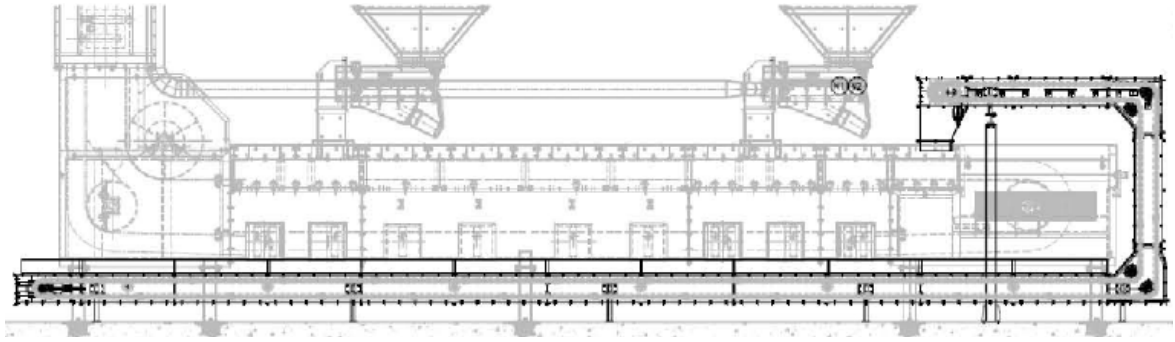
It can be designed with single or double chain and with various capacity following specific application



Dust powder transport capacity from 3 to 50 m<sup>3</sup>/h



# CHAIN CONVEYORS



The dust recovery chain conveyors, are special conveyors used for the recovery of all materials that normally fall from plain belt conveyors an elevators belt conveyors.

With rectilinear design are installed to transport of materials in horizontal or with limited inclinations, they recover materials and unload them in special container, in other machine or in the same machine from which they are fallen

## DUST RECOVERY

**ELIMINATION OF DOWNTIMES TO CLEAN THE AREA AND MACHINES**

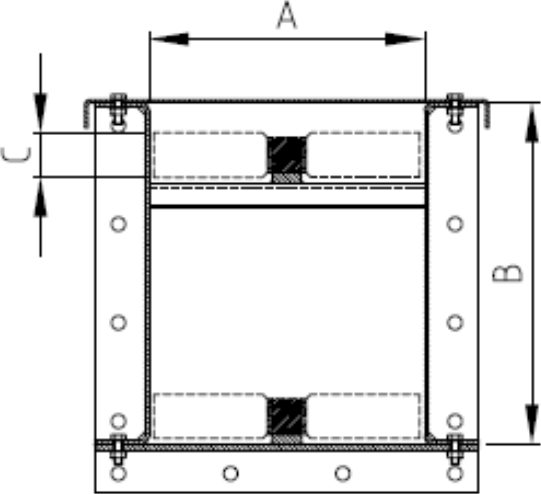


Double chain conveyors for heavy material transport, grain size from 10 to 50 mm.

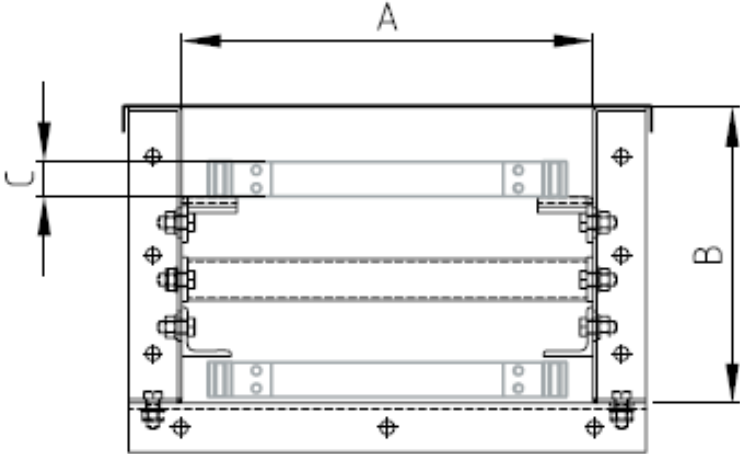
Flow capacity from 10 to 60 m<sup>3</sup>/h

# CHAIN CONVEYORS

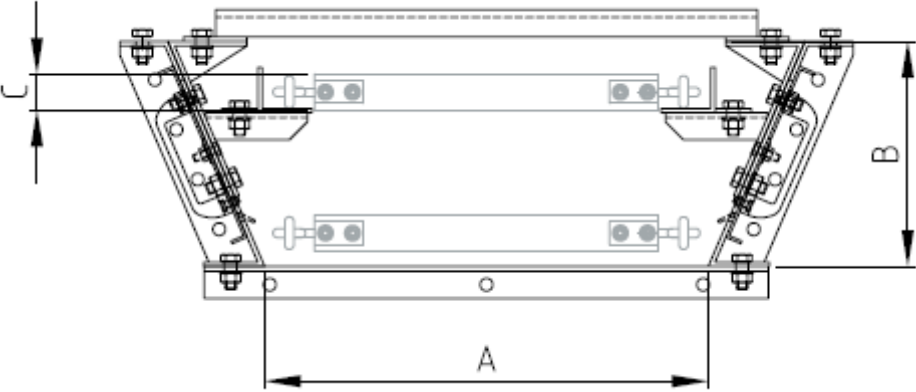
**TC**  
Single chain dust transport



**TC**  
Double chain material transport



**RC**  
Double chain  
Belt conveyor waste material recover



# CHAIN CONVEYORS

**ATTENTION!**  
**THE CAPACITY CAN BE CHANGED FOLLOWING CUSTOMER REQUEST**

MACHINE TYPE	MATERIAL TYPE	MATERIAL SIZE (mm)	CAPACITY (m <sup>3</sup> /h)	A	B	C
TC 240x400	Powder	0 ÷ 3,0	7	240	316	70
TC 280x400	Powder	0 ÷ 3,0	8	280	346	45
TC 300x400	Powder	0 ÷ 3,0	10	300	400	40
TC 390x400	Powder	0 ÷ 3,0	20	390	400	60
TC 510x440	Powder	0 ÷ 3,0	25	510	440	80
TC 420x300	Various material	1 ÷ 50	30	420	300	35
TC 690x510	Various material	1 ÷ 50	50	690	510	50
RC 490x250	Waste material	0 ÷ 40	0,1	490	250	40
RC 690x250	Waste material	0 ÷ 40	0,1	690	250	40
RC 690x300	Waste material	0 ÷ 40	0,1	690	300	60





SMS group



FerrieraValsabbia



PT. GUNUNG GARUDA

*Steel Is Our Business*



ArcelorMittal

