



EUROMEC

Via Cavalier A. Bellicini, n. 36/A
Berzo Inferiore (BS) Italy

Tel: +39 0364 300 687 – Fax: +39 0364 300 937

euromectech@euromectech.it

simtes@simtesimpianti.it

A turn key choice

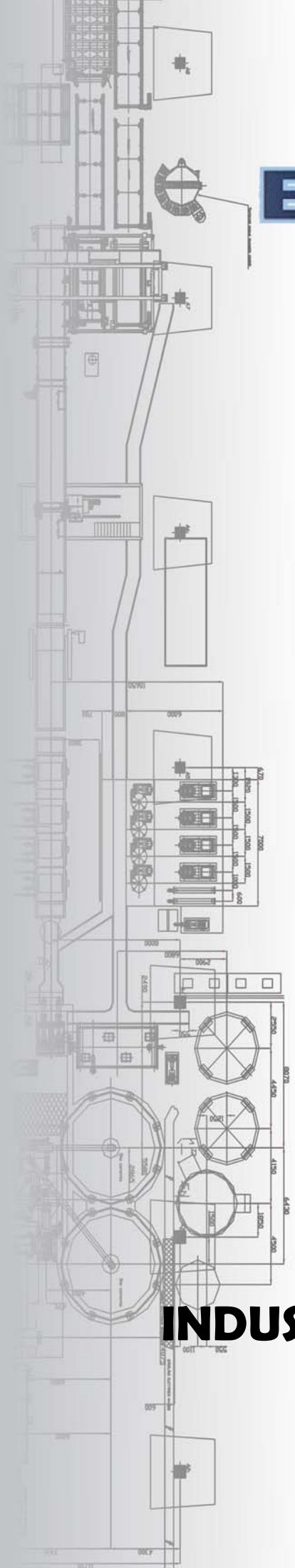
**INDUSTRIAL AUTOMATION
SOLUTION**

DESIGN

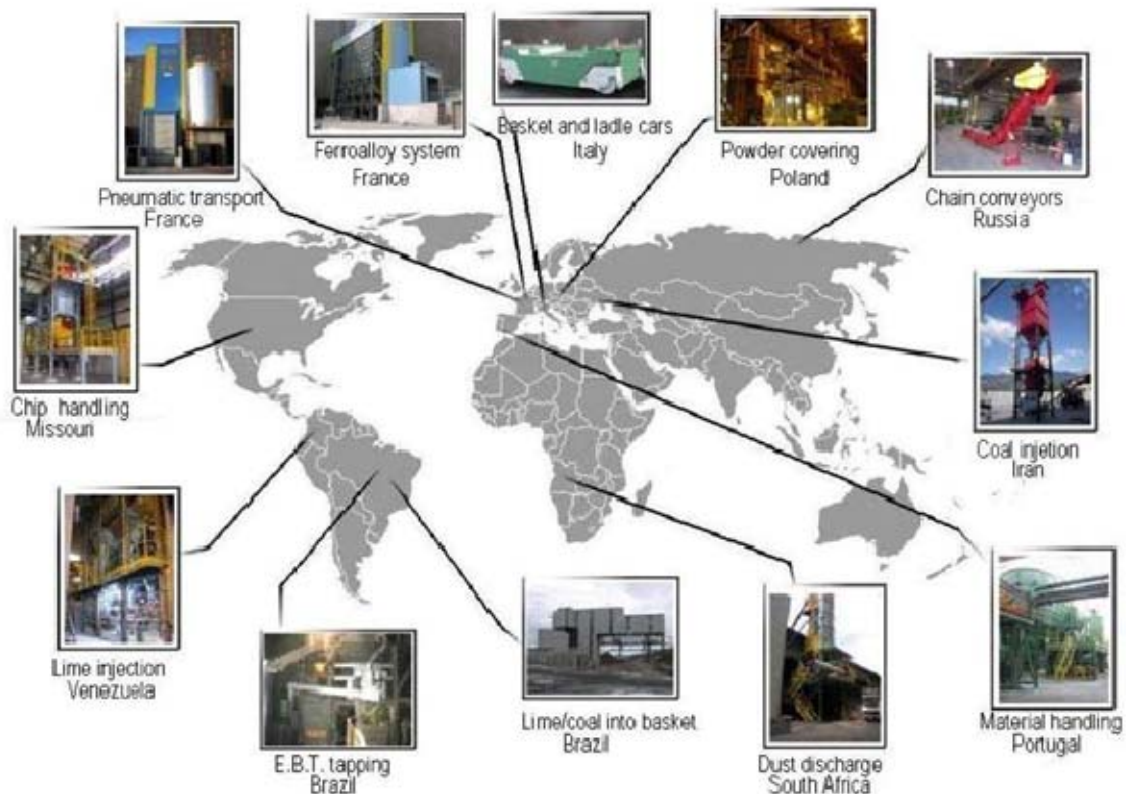
CONSTRUCTION

SUPPLY

ERECTION AND START UP



INDUSTRIAL AUTOMATION SOLUTION



EUROMEC S.r.l.

Legal office:

Via de O, 19; - 24020 Dezzo (BG) Italy

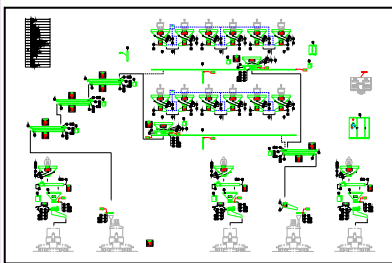
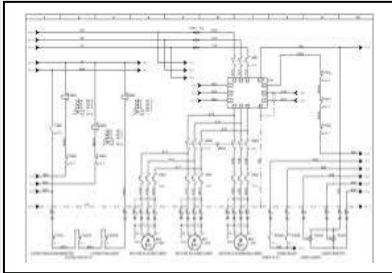
Administrative and operative site:

Via Cav. A. Bellicini, 36/a; 25040 Berzo Inferiore (BS) Italy

Tel. +39 0364300687; Fax +39 0364300937

VAT: 02452580166 – Share capital: € 80.000,00.

ENGINEERING



REALIZATION



ERECTION AND COMMISSIONING



SIMTES was founded in 2006 by EUROMEC and specializes in the planning and realization of industrial automation systems.

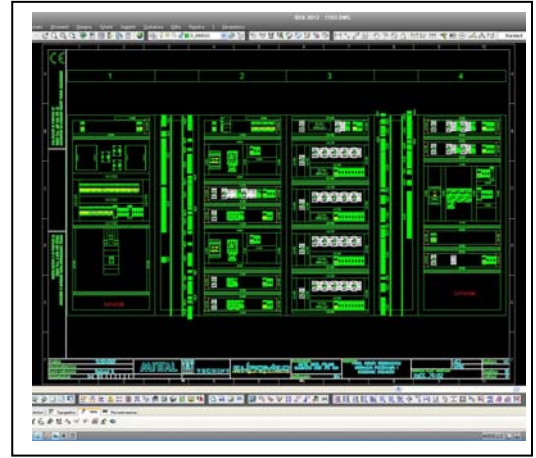
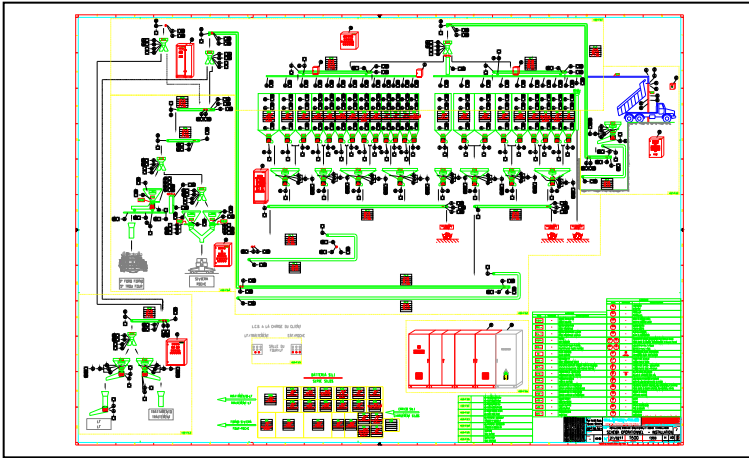
The extensive know how and expertise of our technicians, acquired in more than 20 years of experience in the industrial sector is essential to satisfy even the most complex needs of our customers for the **Bulk Solid Material Handling Systems**.

Our team of engineers and technicians is able to deliver optimal solutions to any kind of plant related problems, which range from primary consultancy to the commercial negotiation and from the design to the construction and installation, ending with technical support services and after-sale maintenance

SIMTES offers **tailor made solutions** in response to various project needs, we stress on optimizing time and costs and provide professional assistance and support during the entire project.

EUROMEC and SIMTES synergy is able to offer turn-key plants, guaranteeing maximum standard of SAFETY, COMPETENCE, QUALITY and PROFESSIONALISM.

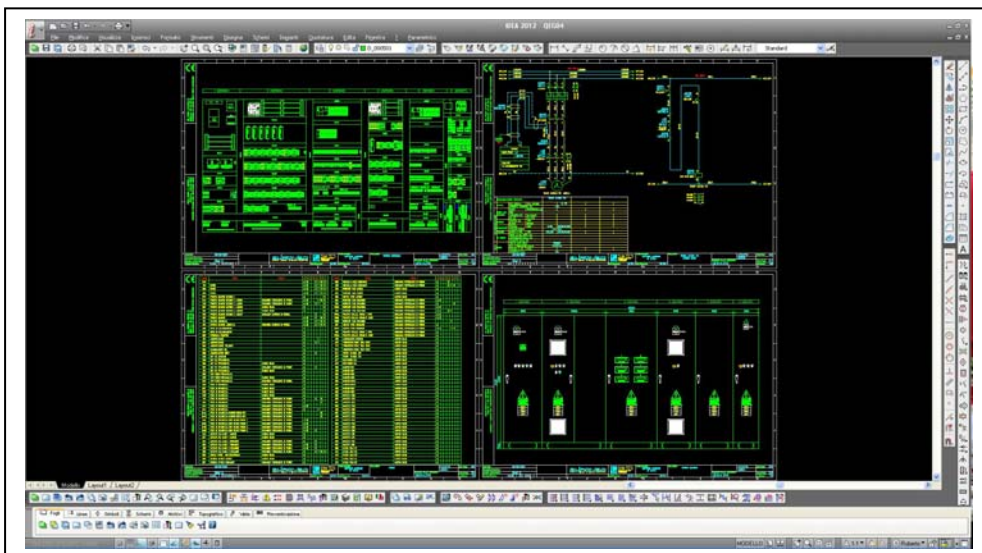
ENGINEERING



**DESIGN
AND
PROGRAMMING
ELECTRICAL
AND
ELECTRONIC
PANEL**

Cable - Z:\Villes\FAMIGLIE_IMPANTATOIR_R0YA101V_YERONA\SCHM004_FERR02LEGE_CALCE_CARBOHE10R01Y004MEG03.TBL

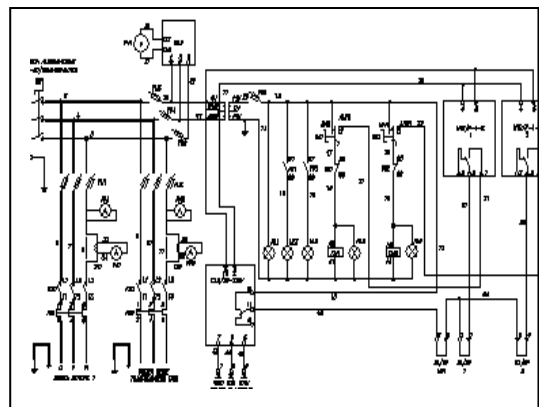
Segno	Ubc.	Funz.	Indice	Ubicazion.	Elementi in.	Filo	Can.	Ponti	Can.	Mosetto	Cavo verso campo	Filo	Elementi in ca.	Ubicat.	Ubicatore
77	44L1.3K1	+11	206								02G03/01/8003_1_8003.11.05	2024.500	02G03_8003.11		
>V53	Etenno		291								02G03/01/8003_1_8003.11.07	2025.510	02G03_8003.11		
>V59	Etenno		76	02G03	2035.209	117.4					015503.01BK.117.4	8117.18K	+F03_8003.11		
>V70	Etenno		81	02G03	2035.294	117.3					015503.01BK.117.3	8117.18K	+F03_8003.11		
>03.11	8J03.11	+04-F03	85	02G03	2035.203	P3					015503.01BK.P3	8117.18K	+F03_8003.11		
>03.2	8J03.2	+04-F03	26	+F03	824.12.11	117.5					117.5		+F03_8003.11		
>03.3	8J03.3	+04-F03	61	+F03		117.5					02C203.14BK.117.5	824.12.11	+F03_8003.11		
>03.4	8J03.4	+04-F03	91	02G03	2035.290	117.6					02C203.14BK.117.6	824.12.12	+F03_8003.11		
>03.7	8J03.7	+04-F03	31	02G03	2035.294	117.3					117.5	824.12.11	+F03_8003.11		
>03.8	8J03.8	+04-F03	41	+F03		117.7					04C203.18BK.117.7	8117.2.12	+F03_8003.11		
>03.9	8J03.9	+04-F03	66	+F03	8117.2.12	117.7					02C203.18BK.117.7	8117.2.11	+F03_8003.11		
>03.10	8J03.10	+04-F03	86	02G03	2035.291	117.8					02C203.18BK.117.8	8117.3.12	+F03_8003.11		
>03.11	8J03.11	+04-F03	46	02G03	2035.294	117.3					04C203.18BK.117.3	8117.2.11	+F03_8003.11		
>03.11.1	8J03.11.1	+04-F03	51	+F03		117.9					04C203.18BK.117.9	8117.2.12	+F03_8003.11		
>03.12	8J03.12	+04-F03	71	+F03	8117.2.12	117.9					02C203.18BK.117.9	8117.3.11	+F03_8003.11		
>03.17	8J03.17	+04-F03	101	02G03	2035.292	117.10					02C203.18BK.117.10	8117.3.12	+F03_8003.11		
>03.18	8J03.18	+04-F03	96	02G03	2035.294	117.3					04C203.18BK.117.3	8117.2.11	+F03_8003.11		
>03.19.5	8J03.19	+04-F03	106	+F03		118.2					02C203.18BK.118.2	8118.1.12	+F03_8003.11		
>03.20.5	8J03.20	+04-F03	126	+F03	8118.1.12	118.2					02C203.17BK.118.2	8118.2.11	+F03_8003.11		
>03.0	02G03	+10-F10	136	02G03	2035.296	118.3					07C203.17BK.118.3	8118.2.12	+F03_8003.11		
>03.1	02G03	+10-F10	111	02G03	2035.295	118.1					02C203.18BK.118.1	8118.1.11	+F03_8003.11		
>03.5	02G03	+10-F10	116	02G03	2035.295	118.4					02C203.18BK.118.4	8118.1.12	+F03_8003.11		
>03.MR	02G03	+10-F10	131	+F03	8118.1.12	118.4					07C203.17BK.118.4	8118.2.11	+F03_8003.11		
>04.3	8J04.3	+04-F04	141	02G03	2035.297	118.5					07C203.17BK.118.5	8118.2.12	+F03_8003.11		
>04.4	8J04.4	+04-F04	121	02G03	2035.295	118.1					02C203.18BK.118.1	8118.1.11	+F03_8003.11		
>04.5	8J04.5	+04-F04	1	02G03	2035.36	24.13					24.13	824.12.21	+F03_8003.11		
>04.6	8J04.6	+04-F04	6	+F03	824.12.21	24.17					24.13		+F03_8003.11		
>04.7.01	8J04.7	+04-F04	16	+F03		24.17					02C203.14BK.24.17	824.12.21	+F03_8003.11		
>04.7.02	8J04.7	+04-F04	21	02G03	2035.37	24.16					02C203.14BK.24.16	824.12.22	+F03_8003.11		
>04.8.A	8J04.8	+04-F04	7	02G03	2035.257	108.4					12VENT11.108.4	8108.2.01/08.108.4	+F03_8003.11		
>04.8.C1	8J04.8	+04-F04	15	02G03	2035.470	32.5					12VENT11.2.32.5	Y108.1	+F03_8003.11		
>04.8.C2	8J04.8	+04-F04	63	+F03									+F03_8003.11		
>04.8.C3	8J04.8	+04-F04	8	02G03	2035.293	P3					12VENT11.3.P3	8108.2.01/08.108.4	+F03_8003.11		
>04.9	8J04.9	+04-F04	311	+F03									+F03_8003.11		
>04.10.1	8J04.10	+04-F04	316	02G03	2035.349	137.2					02G03/01/8003_1_8003.11.70	2035.513	02G03_8003.11		
>04.10.2	8J04.10	+04-F04	321	02G03	2035.350	P3					02G03/01/8003_1_8003.11.71	2035.514	02G03_8003.11		
>04.11.1	8J04.11	+04-F04	321	+F03									+F03_8003.11		
>04.11.5	8J04.11	+04-F04	146	02G03	2035.349	137.2					10L3M03.8BK.137.2	1137.1.5	+F03_8003.11		
			151	02G03	2035.350	P3					10L3M03.8BK.P3	1137.1.2	+F03_8003.11		
			196	02G03	2035.353	137.1					10L3M03.8BK.137.1	1137.1.1/137.1.4	+F03_8003.11		
			161	02G03	2035.361	137.4					11L3M03.8BK.137.4	1137.2.5	+F03_8003.11		
			186	02G03	2035.360	P3					11L3M03.8BK.P3	1137.2.2	+F03_8003.11		
			171	02G03	2035.354	137.3					11L3M03.8BK.137.3	1137.2.1/137.2.4	+F03_8003.11		
			176	02G03	2035.365	140.2					08L3M03.9BK.140.2	1140.1.5	+F03_8003.11		
			181	02G03	2035.356	P3					08L3M03.9BK.P3	1140.1.2	+F03_8003.11		
			186	02G03	2035.363	140.1					08L3M03.9BK.140.1	1140.1.1	+F03_8003.11		
			191	02G03	2035.367	140.4					08L3M03.9BK.140.4	1140.2.5	+F03_8003.11		
			196	02G03	2035.356	P3					08L3M03.9BK.P3	1140.2.2	+F03_8003.11		
			201	02G03	2035.360	140.3					09L3M03.9BK.140.3	1140.2.1	+F03_8003.11		
			6	02G03	2035.267	108.4							+F03_8003.11		
			8	02G03	2035.433	108.5					12VENT11.4.108.5	8108.1.8K	+F03_8003.11		
			9	02G03	2035.434	108.6					12VENT11.5.108.6	8108.2.8K	+F03_8003.11		



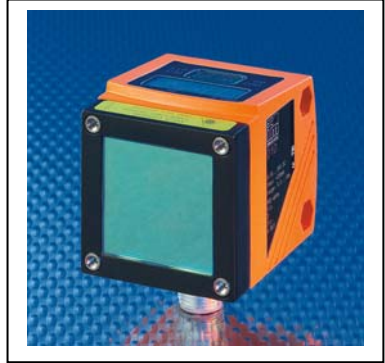
REALIZATION



**ELECTRICAL
AND
ELECTRONIC
PANEL ASSEMBLY
WIRING**



AUTOMATION DEVICES



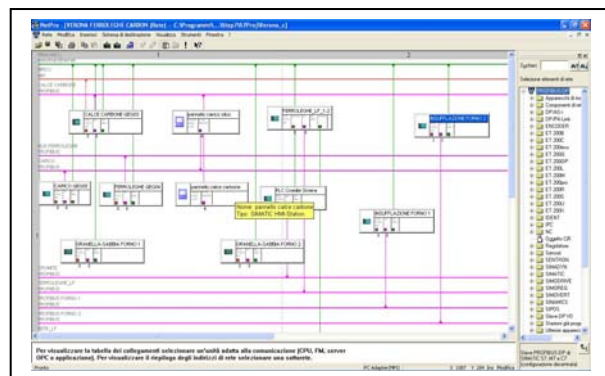
THE DEVICES INSTALLED ARE CHOSEN ACCORDING TO THE FOLLOWING CRITERIA:

- STURDINESS
- RELIABILITY
- ACCURACY
- WATERPROOF

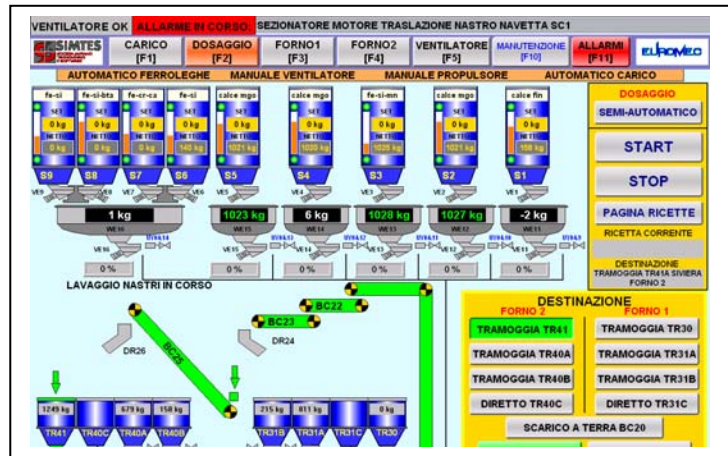
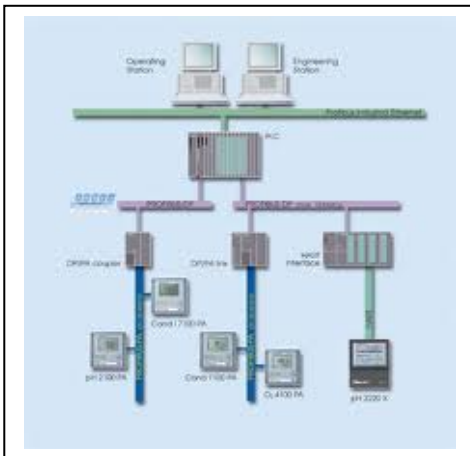
OUR TECHNICIANS ARE TRAINED TO INSTALL, SET AND START-UP THE DEVICES SUPPLIED BY THE COMPANY LEADER IN THE WORLD FOR AUTOMATION



Endress+Hauser

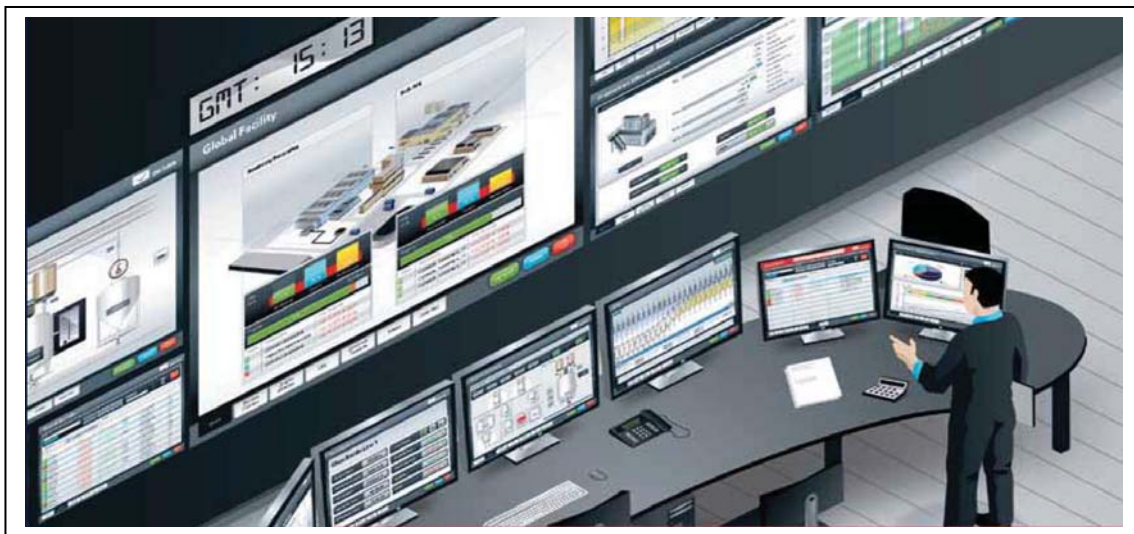


AUTOMATION PLC/SOFTWARE



WE PROGRAM SOFTWARE OF WORLD BRANDS IN AUTOMATION:

- SIEMENS
- ALLEN BRADLEY
- TELEMECANIQUE



INSTALLATIONS



INSTALLATION
OF
ELECTRIC AND ELECTRONIC
SYSTEMS
AND
DEVICES
ON BOARD OF THE
MACHINERY



WE COLLABORATE WITH:

